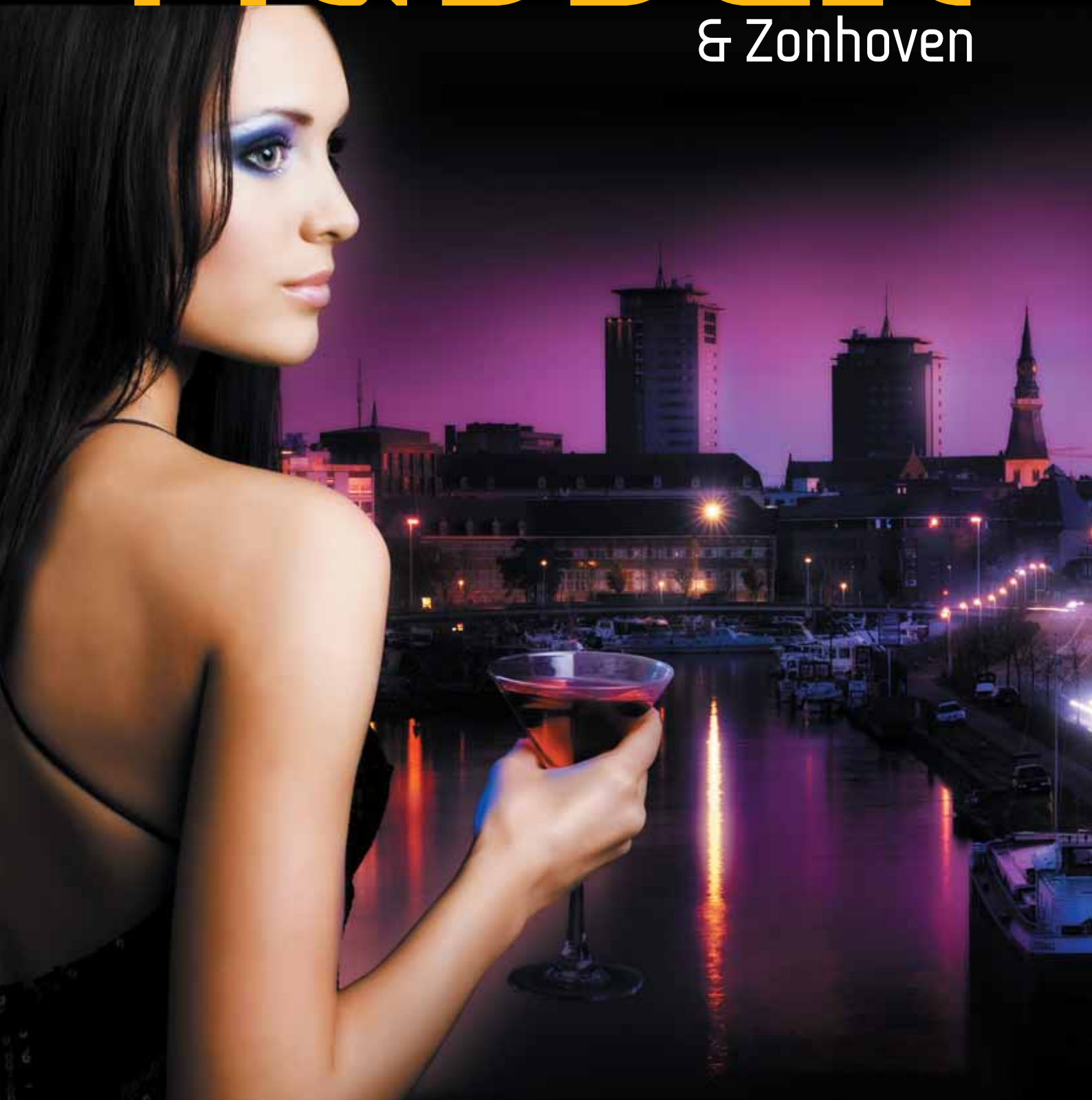


# Hasselt

& Zonhoven





## Every visitor an ambassador of Hasselt!

When one says "Hasselt" you immediately think about jenever, spiced biscuits and, of course, free buses. These three products placed the Capital of the Taste on the world map. But Hasselt has a lot more to offer. During the past few years, the Capital of the Taste has developed into a hip, trendy city with a broad spectrum of tourist attractions. Hasselt is the ideal city trip destination for anyone who likes to shop, enjoy good food and a touch of culture.

More and more people visit Hasselt; this is very important for the economic development of Hasselt.

2010 also promises to be an important year for tourism. The Seven-yearly Virga Jesse festivals are organised for August when tens of thousands of Hasselt residents and tourists will come to enjoy the numerous activities that will be presented.

I wish you lots of fun in Hasselt, the City of the Taste!

**Rob Beenders**  
Alderman of Tourism



## Relax with a touch of Burgundy.

If you want to relax, you can walk, cycle or just spend time however you want in the unique surroundings of Zonhoven. Recently, you are able to combine that with a lovely "Zonhovens plezierbier" at Zonderik. Its subtle taste, with a touch of honey, will make you long for more.

If you are more of a fauna and flora lover, you will be more interested in the "land of water", as the "De Wijers" is called. Nevertheless, you will be thrilled by the dynamics of the force of the centre and surprised by the hunting grounds of prehistoric man.

In short, accidental passer-by, active day visitor or tourist: Zonhoven is surprisingly wonderful!

**Kristine Smuts**  
Alderman of Tourism

## LEGEND

TOURISM INFOMAGAZINE 2010 EDITOR



TRADING HOURS



ADMISSION FEE



INFORMATION

PUBLIC  
TRANSPORT

TIP



DID YOU KNOW?



GROUPS

## CULTURE

## MUSEUMS

National Jenever Museum	6-7
Combination ticket museums and Japanese Garden	7
Fashion Museum Hasselt	8
Museum 'Het Stadsmus'	9
Museum of Father Valentinus Paguay	10
Chime towers	11
Literary Museum	11
Visitors' centre Old Town Hall in Zonhoven	12

## HERITAGE

Old Cemetery	12
Herkenrode Abbey	13
Herkenrode Abbey Reflection centre	14
The "Holsteen" in Zonhoven	14
Spalbeek Chapel	15
Theatre on the Market 2010	15

## ART - THEATRE - MUSIC

Cultural centre	16
Muziekodroom	16
Arts Centre BELGIUM	16
Art Centre Z33	17
GC Tentakel Zonhoven	17

## NATURE

Japanese Garden	18
Nature Domain Kiewit	19
Garden of Dina Deforme	19
Herkenrode Abbey Herb Garden	20
Herkenrode Beehive	20
Park Nature & Culture	21
Garden 't Zonhof and Garden family Vandecruys	22
Nature hikes - De Wijers	22-23

## OUT AND ABOUT

City tram	24
Covered wagon trips in Zonhoven	24
Airfield Aero-Kiewit	25
Hot-Air Balloon	25
Vespa route	25
Spontaneous bicycle fun	26-27
Theme walks	27
Boat trip on the Albert Canal	28
Sani-station for motor homes	28
Mobility and accessibility	29
Diagram free city buses	30
Vehicle routes	31
Euregio Maas-Rhine	31
Twin cities	31

## SHOPPING IN HASSELT AND ZONHOVEN

Fashion and Shopping city	32
Markets in Hasselt and Zonhoven	32
Hasselt ticket	32

## CHILD FRIENDLY

Plopsa Indoor Hasselt	33
City tour with the children's cart	33
The biggest ramp in the Benelux	33

## RELAXATION

Grenslandhallen - Ethias Arena	34
Events Hall Den Dijk	34
Kinepolis	34
Mega Disco Versuz	34
Addresses Sport and Recreation	35
Zebra cinema	35
Attractions in the area	36-37
Wellness in Zonhoven	38

## LOGISTICS IN HASSELT AND ZONHOVEN

Hotels	39-40
Guest rooms (B&B)	41-42-43-44
Holiday homes	45
Budget stays	46
Camping sites	46

## PACKAGES FOR INDIVIDUALS AND GROUPS

Index: See page	47
-----------------	----

Note! All prices mentioned in the brochure are subject to change.



Information on pages 4 and 5

# HASSELT 2010

## Septennial Virga Jesse Festival

Hasselt will attract hundreds of thousands of visitors from Friday 13 to 29 August for the 45th celebration of the septennial Virga Jesse festivals. The city organises a broad spectrum of events regarding the life of Maria under the slogan "Virga Jessefeesten 2010: tijd ons gegeven". The Virga Jesse Festival are after all a septennial gift of the Virga Jesse to its city, its residents and the numerous visitors. A gift that develops when people make time available for doing the things there never seems to be time for: getting together again, spending time thinking about the life of Maria, preparing for the festivals together, celebrating together...



### A PIECE OF HISTORY

The tradition regarding the celebration of the Virga Jesse dates back to the 14th century. It was however only after the retreat of the Dutch occupation in 1682 that the septennial festivals were established. This tradition was interrupted three times, twice during the French Revolution and again in 1940, at the start of the Second World war. That is why the 45th edition of the Virga Jesse Festival will be celebrated in 2010.

### OMMEGANG

The Ommegang is the highlight of the Virga Jesse festivals. It travels through the streets of Hasselt in the afternoons on Sunday 15, 22 and 29 August and in the evening on Wednesday 18 August. More than 2,000 participants – with a statue of the Virga Jesse – produce a colourful, though modest, showcase of representations of scenes from Maria's life, in a modern context.

### EVENTS

Various cultural events take place in Hasselt during the Virga Jesse festivals, ranging from concerts, a chime- or organ music festival and performances by more than 40 choirs and instrumental ensembles to exhibitions in the various museums in Hasselt, which always strive to add something special to the festivities.

### FESTIVAL IN THE CITY

#### STREET DECORATIONS

For centuries now, the people of the Hasselt region decorate their houses and neighbourhood every seven years with flowers, fountains, flags and decorations. The Virga Jesse basilica, the Sint-Quintinus Cathedral and the Minderbroeders-kerk even have a special flowery touch in the form of floral artwork. Around the Green Boulevard, at the most important entrances and at the large squares, there will be flags to indicate the Virga Jesse celebration to visitors and the evening light will give the city a special, festive atmosphere.

Apart from the festive decoration of the city, the spectator is also continuously surprised by the numerous scenes that represent either the life of Maria or the wonders of the Virga Jesse, for example, de Dolende Man, de Dief op het Hek, het Kind van de Morin, het huisje van Jan en Katrien, de Stella Maris, the "Heilig Paterke" van Hasselt and the "Huisje van Nazareth".

#### TOUR OF THE GIANT

On Monday 16 August 2010, the tour of the Hasselt giant Don Christophe - or the Langeman - and his company will be at the square in front of the Virga Jesse Basilica.





## HIGHLIGHTS DURING THE VIRGA JESSE FESTIVAL 2010

The festive opening of the Virga Jesse Festival will be on Friday 13 August. The complete cultural program will be included in a special folder, which can be obtained from Hasselt Tourism from June 2010. Apart from this, the daily programs will be displayed across the city during the festival.

Information: [www.virgajessefeesten.be](http://www.virgajessefeesten.be)

## PRACTICAL

### TOURISM ARRANGEMENTS

#### GUIDED CITY WALKS FOR GROUPS

Every evening from 14 up to and including 29 August 2010, guided walks will be organised to the centre of Hasselt, which will be magically transformed into a fairy-like garden.

The walks will start at the office of Hasselt Tourism, Lombaardstraat 3 (City hall).

Duration: 2 hours

Fee for guide: € 60 – one guide per 25 persons

Reservation: Hasselt Tourism,

T +32 11 23 95 42

or e-mail: [groepsbezoeken@hasselt.be](mailto:groepsbezoeken@hasselt.be)

#### PACKAGES FOR GROUPS

There is quite a variety of city walks, tours and day trips for associations, clubs, enterprises and vehicle associations. For more information, refer to the tourism brochure 2010, which can be ordered for free from Hasselt Tourism.

## TICKETS

### FOR THE OMMEGANG

There are 4,000 grandstand seats available per Ommegang. Tickets can be bought in advance at € 10, or on the day of the Ommegang at € 12. It can be obtained from 1 April 2010 at: Hasselt Tourism, Lombaardstraat 3, 3500 Hasselt, T+32 11 23 95 40.

### RESERVATIONS FOR THE CONCERTS

can be done at Hasselt Tourism from 1 April 2010, Lombaardstraat 3, 3500 Hasselt, telephone +32 11 23 95 40.

## INFORMATION

Hasselt Tourism  
Lombaardstraat 3 (City Hall)  
BE-3500 Hasselt

T+32 11 23 95 40

F+32 11 22 50 23

[toerisme@hasselt.be](mailto:toerisme@hasselt.be)

[www.hasselt.eu](http://www.hasselt.eu)

[www.virgajessefeesten.be](http://www.virgajessefeesten.be)

Take note!

During the festival from 14 up to and including 29 August 2010, Hasselt Tourism will be open all day from 09:00 to 22:00.

## MUSEUMS



## i INFORMATION

National Jenever Museum  
Witte Nonnenstraat 19  
BE-3500 Hasselt  
T +32 11 23 98 60  
F +32 11 21 10 50  
jenevermuseum@hasselt.be  
www.jenevermuseum.be



## National Jenever Museum

One of the major attractions of Hasselt can be found in the National Jenever Museum where you can experience the distilling process and sample a spicy drink in an authentic distillery.

### i OPENING HOURS

- open from 1 April to 31 October: from Tuesday to Sunday from 10:00 to 17:00.
- also open in July and August on Mondays from 10:00 to 17:00.
- open from 1 November to 31 March: from Tuesday to Friday from 10:00 to 17:00 and on Saturday and Sunday from 13:00 to 17:00.
- closed: every Monday except for July and August, on 1 January, from 4 to 31 January and on 24, 25 and 31 December 2010.

### € RATE

- € 3,50 per person, including a drink.
- € 1 per person for people younger than 26 years.
- up to 12 years free.

### ? DID YOU KNOW?

No dogs allowed.

### 👤 GUIDED TOUR FOR GROUPS

Available: throughout the whole year, during the opening hours of the museum (on request also outside of these hours)

Duration 1 ½ hours

Rate: € 2.50 per person, including a drink for groups of 15 or more persons

Fee for guide: € 60 (maximum 2 hours) - one guide per 25 persons

Reservation: Hasselt Tourism, T +32 11 23 95 42, [groepsbezoeken@hasselt.be](mailto:groepsbezoeken@hasselt.be)

### 👤 JENEVER ROUTE FOR GROUPS

#### NATIONAL JENEVER MUSEUM AND CITY WALK

The jenever route distils the best of bubbling Hasselt for you:

- a guided tour to the National Jenever Museum
- an informal drink served in the tasting room of the museum
- a guided city tour to a selection of buildings, monuments and places that illustrate the rich jenever history of Hasselt
- the jenever route brochure
- a little white one (chilled jenever) along the way in a cosy pub.

Available: throughout the whole year, during the opening hours of the museum

Duration 4 hours

Rate: € 6 per person (brochure, museum entrance, city tour and 2 drinks)

Fee for guide: € 120 per guide - one guide per 25 persons

Reservation: Hasselt Tourism, T +32 11 23 95 42, [groepsbezoeken@hasselt.be](mailto:groepsbezoeken@hasselt.be)

### 👤 DRINK TOUR FOR GROUPS

#### NATIONAL JENEVER MUSEUM, CITY TOUR AND TWO INFORMAL DRINKS

After a guided tour to the National Jenever Museum and a tasting of the museum jenever, you depart with the city tram, for an hour long guided city tour. The program is concluded in a cosy little pub, De Kleine Hal, where the pub owner serves another a little white one (chilled jenever) from Hasselt.

Available: daily, during the opening hours of the museum

Duration 3 hours

Rate: € 9 per person, minimum 25 and maximum 47 participants

Fee for guide: € 90

Fee for 2nd guide: National Jenever Museum from 25 persons: € 60

Reservation: Hasselt Tourism, T +32 11 23 95 42, [groepsbezoeken@hasselt.be](mailto:groepsbezoeken@hasselt.be)



## ! TIP

Only while walking the jenever route: combine a visit to the National Jenever Museum with a city tour. The jenever brochure can be obtained from Hasselt Tourism at € 6 per person, including a visit to the museum and 2 drinks.

## 👤 JENEVER TASTING FOR GROUPS

Guided tour to the National Jenever Museum including jenever tasting. Discover and experience, with all your senses, the fascinating story behind the drink.

Available: daily, during the opening hours of the museum

Duration 2 hours

Rate: € 10 per person (museum entrance, tasting and certificate of participation)

Fee for guide: € 60 - maximum 15 participants per workshop

Reservation: National Jenever Museum, T +32 11 23 98 60

## EXHIBITIONS 2010

## Drinks at the neighbours. Dutch posters for jenever and liqueur

02/02/2010 - 24/04/2010

The National Jenever Museum established a tradition collecting and studying old and recent Belgian posters for jenever and liqueur. This exhibition looks across borders and searches for similarities and differences between similar Dutch posters. With the support of the Jenever Museum in Schiedam, The Netherlands.

## Vieux Systems. Distillation in the 19th century

30/05/2010 - 26/09/2010

On malts and distillation in the 19th century.

## Knowledge - Technique - Work, world class from Euregio Maas-Rhine

10/10/2010 - 09/01/2011

The exhibition presents the communal and across-border history of the economic life in the region. The theme's technique, innovation and science are central to this. The exhibition is amusing, popular, enjoyable and suitable for children aged 10 and over.

## Combination ticket for museums and Japanese Garden

If you wish to link culture and nature and conclude your stay in Hasselt in a superbly rewarding fashion, then use a combination ticket. This special offer ticket gives you the chance to link a visit to the museums in Hasselt to the Japanese Garden at group tariff. It is really worthwhile using use of this offer!

## i OPENING HOURS

- Available in 2010, during the opening hours of the museums and the Japanese Garden.

## € RATE

- € 11 per person

## i INFORMATION

Available from Hasselt Tourism, the museums, the Japanese Garden and quite a few hotels.

## OFFER

- the National Jenever Museum with a 'whitey' or soft drink
- the City Museum 'Het Stadsmus'
- the Hasselt Fashion Museum
- the Japanese Garden (\*)



## ? DID YOU KNOW?

\* In the period during which the Japanese Garden is closed (from 1 November to 31 March), the entrance ticket to the garden is replaced by a booklet sketching the historic city tour and a cup of coffee is served in Het Tuincafé (The Garden Cafe), adjacent to the city museum 'Het Stadsmus'.



## i INFORMATION

Fashion Museum Hasselt  
 Gasthuisstraat 11  
 BE-3500 Hasselt  
 T +32 11 23 96 21  
 F +32 11 22 10 66  
 modemuseum@hasselt.be  
 www.modemuseumhasselt.be



## ! TIP

### FASHION AND DESIGN GUIDE

For € 4 you can buy the hippest up-to-date guide of boutiques and shops in Hasselt. Saunter along the exclusive shopping streets of Hasselt in style. Obtain the guide with an extensive route description from Hasselt Tourism.

# Fashion Museum Hasselt

The proverb says 'You are what you wear'. But you also are what you radiate, and the flourishing Fashion Museum also contributes considerably to Hasselt's charm.

## EXHIBITIONS 2010

### COLLECTION#01 - HISTORICAL OVERVIEW 1750-2000

still up to 07/03/2010

The exhibition Collection #01 shows you the history of western fashion from 1750 until now in a captivating chronological and representative overview.

### ULTRA MEGALORE

27/03/2010 - 06/06/2010

The exhibition gives a glimpse into the world of the international top model Hannelore Knuts. New or existing work will be on display from international names such as Juergen Teller, JP Mondino, Ugo Rondinone, Azzedine Alaïa, Philip Lorca diCorcia, Ali Mahdavi, Jean Paul Gaultier, Edward Lipski, Tim Walker, ... and from Belgium such as Luc Tuymans, Filip Metten, Alex Salinas, Peter Rogiers, Annemie Van Kerckhoven, Danny Devos, .... The exhibition is a confrontational glance at the world of Hannelore Knuts.

### DEVOUT/DIVINE. FASHION VS. RELIGION

26/06/2010 - 09/01/2011

Prior to the Fashion Museum Hasselt, the septennial Virga Jesse festivals were the motivation for an exhibition regarding the use of religious symbols in fashion.

## i TRADING HOURS

- open from 1 April to 31 October: from Tuesday to Sunday from 10:00 to 17:00.
  - open from 1 November to 31 March: from Tuesday to Friday from 10:00 to 17:00 and on Saturday and Sunday from 13:00 to 17:00.
  - closed: every Monday and on 1 January, 24, 25 and 31 December 2010.
- The Fashion Museum closes for the set-up and dismantling of exhibitions from 8 to 26 March and from 7 to 25 June 2010.

## € RATE

- € 5 per person
- € 2 per person for children and students from 13 to 18 years.
- up to 12 years free.

## 👤 GUIDED TOUR FOR GROUPS

Available: throughout the whole year, during the opening hours of the museum (on request also outside of these hours)

Duration 1 ½ hours

Rate: € 4 per person for groups of 15 or more persons

Fee for guide: € 60 (for maximum 2 hours) - one guide per 25 persons

Reservation: Hasselt Tourism, T +32 11 23 95 42, groepsbezoeken@hasselt.be

## 👤 THE FASHION ROUTE FOR GROUPS

### FASHION MUSEUM AND CITY WALK

Do you wish to learn more about Hasselt as an exclusive shopping and fashion city? Then this deal is definitely something for you:

- a guided tour to the Hasselt Fashion Museum
- a guided city tour of one of the most beautiful shopping cities in the country, whereby you get an overview of what can be seen and bought in terms of fashion, design and surprising accessories.

Available: throughout the whole year, during the opening hours of the museum

Duration 4 hours

Rate: € 4 per person (museum entrance, city tour)

Fee for guide: € 120 per guide - one guide per 25 persons

Reservation: Hasselt Tourism, T +32 11 23 95 42, groepsbezoeken@hasselt.be



### i INFORMATION

Het Stadsmus (The City Museum)  
 Guido Gezellestraat 2  
 BE-3500 Hasselt  
 T +32 11 23 98 90  
 F +32 11 26 23 98  
 hetstadsmus@hasselt.be  
 www.hetstadsmus.be

### ? DID YOU KNOW?

Only on the historic walk: combine a visit to Het Stadsmus (the City Museum) with a city tour. Buy the brochure with extensive route description from Hasselt Tourism for € 2.50.



### ! TIP

Each Sunday in July and August there is an appetizer concert Muscadet from 11:00 in Het Tuincafé, adjacent to Het Stadsmus.



## Museum 'Het Stadsmus'

Discover the residents of Hasselt and their past in this extraordinary museum that casts a modern glance at the history of the city.

### EXHIBITIONS 2010

**THE SEVENTH YEAR. THE SEPTENNIAL FESTIVALS IN THE MAAS-RHINE REGION**  
 05/06/2010 - 29/08/2010

Exhibition based on the septennial Virga Jesse Festival. The exhibition places the festivals of Hasselt in the broader perspective of the eight septennial festivals currently still existing in the Euregio.

**COLOUR MULTITUDE**  
 03/10/2010 - 17/11/2010

Colour multitude is an interactive exhibition whereby children can look at the illustrations, listen to the stories or create their own illustration. Their vote counts for the Colour multitude prize. In cooperation with Clavis publishers.

### i OPENING HOURS

- open from 1 April to 31 October: from Tuesday to Sunday from 10:00 to 17:00.
- open from 1 November to 31 March: from Tuesday to Friday from 10:00 to 17:00 and on Saturday and Sunday from 13:00 to 17:00.
- closed: Mondays, on 1 January, from 11 to 31 January, on 24, 25 and 31 December 2010.

### € RATE

- free (some temporary exhibitions require an entrance fee).
- € 1 for the listening guide.

### 👤 GUIDED TOUR FOR GROUPS

Wander through the streets of Hasselt and discover the famous residents of the city in Het Stadsmus. A fascinating and intriguing journey that you certainly will never forget.

Available: throughout the whole year, during the opening hours of the museum (on request also outside of these hours)

Duration 1 ½ hours

Rate: free - some temporary exhibitions require an entrance fee.

Fee for guide: € 60 (for maximum 2 hours) - one guide per 25 persons

Reservation: Hasselt Tourism, T +32 11 23 95 42, groepsbezoeken@hasselt.be

### 👤 THE HISTORICAL ROUTE AND THE STADSMUS FOR GROUPS

Through this fascinating historical tour you discover the residents of Hasselt and their past.

This journey of discovery includes:

- a guided tour to The City Museum
- a local beer from Limburg served at the Tuincafé (Garden cafe)
- a guided city tour with the focus on the Loonse, Luikse and the history of Hasselt
- the 'historic city tour' brochure.

Available: throughout the whole year, during the opening hours of the museum  
 Duration 4 hours

Rate: € 4.50 per person (brochure, museum entrance, city tour and a local beer)

Fee for guide: € 120 per guide - one guide per 25 persons

Reservation: Hasselt Tourism, T +32 11 23 95 42, groepsbezoeken@hasselt.be



### i INFORMATION

Museum of Father Valentinus in Hasselt  
Minderbroedersstraat 19  
BE-3500 Hasselt  
T +32 11 24 10 63  
F +32 11 25 06 88  
p.karelvip@telenet.be

### ? DID YOU KNOW?

The tomb and the museum of Father Valentinus Paquay (1828-1905) in the Minderbroederskerk draw thousands of people annually. And justifiably so. It is not for nothing the the "Heilig Paterke" was canonised by Pope John Paul II on 9 November 2003. The museum houses utensils and clothing of Father Pater Valentinus Paquay, as well as quite a bit of information from his home surroundings.

## Museum Father Valentinus

One of the most mind boggling things in Hasselt is probably the 'Heilig Paterke' or Father Valentinus Paquay who was known during his life as the confessor par excellence from the Hasselt and surrounding areas. You really do not have to be a pilgrim to become silent and to muse during a visit to his tomb and the museum dedicated to his memory.

### i OPENING HOURS

- open on weekdays from 9:00 to 11:30 and from 13:30 to 16:00.
- open on Saturday and Sunday from 9:45 to 11:30 hours and from 13:30 to 16:00.
- closed on all Belgian public holidays, from 24 December up to and including 2 January and also in the afternoons of Maundy Thursday, Good Friday and Easter Saturday.

### € RATE

- free.

### 👤 GUIDED TOUR FOR GROUPS

The tour starts at the Virga Jesse Basilica. This is followed by an extensive visit to the Sint-Rochus Church (or Paterkes Church), the tomb and the museum. On request you can attend a 24-minute screening of the life and work of Father Valentinus Paquay.

Available: daily, by appointment, during the opening hours of the museum

Duration 2 hours

Rate: free.

Fee for guide: € 60 - one guide per 25 persons

Reservation: Hasselt Tourism, T +32 11 23 95 42, [groepsbezoeken@hasselt.be](mailto:groepsbezoeken@hasselt.be)





### i INFORMATION

Chime tours of the Sint-Quintinskathedraal  
Vismarkt z/n  
BE-3500 Hasselt  
T +32 11 23 98 90  
F +32 11 26 23 98  
hetstadsmus@hasselt.be  
www.hetstadsmus.be

### ! TIP

The Carillon tower also frequently sounds special carillon concerts. More information from Hasselt Tourism and on [www.uitinhasselt.be](http://www.uitinhasselt.be)



### i INFORMATION

Literary Museum  
Bampsiaan 35  
BE-3500 Hasselt  
T +32 11 22 26 24  
F +32 11 23 22 97  
literairemuseum@skynet.be  
www.literairemuseum.be

### ? DID YOU KNOW?

Temporary exhibitions are also frequently held: Shaun Tan, illustrator: 7 March up to and including 15 May 2010.

### ! TIP

Groups can also gather for workshops in the studio of the Literary Museum.

## Chime towers

Hasselt is a musical city and that becomes clear in various ways. Among others, through the resonance and chiming of the bell towers that give immediate presence to daily activities. If you want to find out everything about time clocks, chimes and bell towers, just take a climb up to the bell platform at the top of the tower. The sublime view as well as the impressive panorama of Hasselt will take your breath away.

### i OPENING HOURS

- opening days and -hours: see website [www.hasselt.eu](http://www.hasselt.eu)
- for groups throughout the year by appointment.

### € RATE

- € 1.50 per person
- € 1 per person for school classes from 12 years and older.
- up to 12 years free.

### 👤 GUIDED TOUR FOR GROUPS

Available: open throughout the year  
Duration 1 ½ hours  
Rate: € 1,50 per person for groups from 15 persons, up to 12 years free  
Fee for guide: € 60 (for maximum 2 hours) - one guide per 15 persons  
Reservation: Hasselt Tourism, T +32 11 23 95 42, [groepsbezoeken@hasselt.be](mailto:groepsbezoeken@hasselt.be)

## Literary Museum

In a beautiful mansion close to the station you can use goggle-boxes to find out everything you want to know about your favourite authors and artists. Or you can descend into a mine gallery in search of books on the coal mines. You can find out more about fairy tales and their deeper meaning in the exhibition 'Giftige appels op gouden bordjes' ('Poisonous apples on small golden plates'). Eating and drinking in fairy tales.' In 'Van schrijver tot lezer' ('From author to reader'), you can see how a book is created.

### i OPENING HOURS

- open from Wednesday up to and including Saturday and the first Sunday of the month from 14:00 to 17:00. Closed on public holidays, 26 December and 2 January.

### € RATE

- € 2.50 per person
- € 2 per person up to 18 years and for groups from 10 persons or more.

### 👤 GUIDED TOUR FOR GROUPS

Adult groups can choose between a general tour that will introduce them to all exhibitions in the museum or a specific exhibition. Families or school groups can choose an interactive guided tour to one or more of the exhibitions. There is an educational newsletter for schools.

Available: for groups throughout the year by appointment.  
Duration 1 ½ hours  
Rate: € 2 per person for groups of 10 or more persons  
Fee for guide: € 30  
Reservation: Literary Museum, T +32 11 22 26 24, [literairemuseum@skynet.be](mailto:literairemuseum@skynet.be)



### i INFORMATION

Visitor's centre Old Town Hall  
 Heuvenstraat 4  
 BE-3520 Zonhoven  
 T +32 11 60 26 19  
 F +32 11 52 34 42  
 toerismeazonhoven.be  
 www.zonhoven.be/toerisme

### ! TIP

For those wanting more, a visit to the pre-historical Holsteen in the unsurpassed nature reserve De Teut is definitely recommended!

## HERITAGE



### i INFORMATION

Old Cemetery  
 Kempische Steenweg (next to nr.89)  
 BE-3500 Hasselt  
 T +32 11 23 95 40

### i INFORMATION

The old cemetery is within walking distance of the city centre.

## Visitor's centre Old Town Hall Zonhoven

In the visitor's centre of Zonhoven, you go back thousands of years via an informative media exposition. Discover the evolution of landscape and humans in the time of Darwin as if you were there yourself. Imagine your own pre-history at the pre-historical tracks and objects that were rediscovered in Zonhoven or go on an exploration through the world of the Zonhovener of 11,000 to 6,000 years ago.

### i OPENING HOURS

- every weekday from 9:00 to 12:00 and from 13:00 to 16:00.
- also open on Saturday and Sunday in July and August from 10:00 to 12:00 and from 13:00 to 16:00.

### € RATE

- free.

## Old Cemetery

A cemetery often says as much as historical works. There you read the history of families and dynasties, there you see the evolution of architecture and you discover the social hierarchy of a community. Moreover old cemeteries frequently contain pearls of sculpture. In the central chapel of the 19<sup>th</sup> century cemetery you learn more about the history and the customs and traditions of this cemetery. Or you can simply walk through the cemetery and immerse yourself in the sedate atmosphere that still prevails there.

### i OPENING HOURS

- open daily from 10:00 to 16:00.

### € RATE

- free.

### 👥 GUIDED TOUR FOR GROUPS

Available: open throughout the year, during the opening hours of the cemetery  
 Duration 2 hours  
 Rate: free.  
 Fee for guide: € 60 - one guide per 25 persons  
 Reservation: Hasselt Tourism, T +32 11 23 95 42, groepsbezoeken@hasselt.be



### i INFORMATION

Herkenrode Abbey  
 Herkenrodeabdij 4  
 BE-3511 Hasselt-Kuringen  
 T +32 11 33 43 70 - F +32 11 33 46 45  
 secretariaat@herkenrode.be  
 www.abdijsiteherkenrode.be  
 www.herkenrode.be



### ! TIP

Herkenrode also lies on the Limburg cycle route network between junctions 94 and 95. The visitors centre is known as a cycling café.

Information: Herkenrode Herb garden  
 See page 20.

## The Abbey site in Herkenrode

In the Abbey of Herkenrode you can walk through an important piece of Hasselt's history. The abbey was admitted to the Order of Citeaux in 1217 as the first women's abbey in Belgium and the Netherlands. During this time Christianity flourished. In 1317 the Holy Sacrament of Miracle came to the abbey of Herkenrode. In 1796 the French Revolution put an end to the religious activity and the abbey remained as an agricultural enterprise. In 1998 the Flemish Region bought the buildings that had, in the meantime, fallen into disrepair, as well as 100 hectares of surrounding natural reserve. They started restoration activities, which are now nearing completion and restored the earlier pomp and circumstance of the abbey and made it accessible to the general public. Culture and nature are the primary motives for this new set-up. Visiting the 2-hectare herb garden is certainly worth the while.

Above the bird sanctuary on the abbey estate one can locate the temporary visitor's centre from 1 April to 31 October on Tuesdays to Sundays from 10:00 to 18:00. The abbey can be visited daily free of charge.

### ? DID YOU KNOW?

A real abbey beer was developed in cooperation with the Sint-Jozef brewery from Bree. The Herkenrode Tripel (Triad), a 100% natural beer with a strong head of foam, light blonde colour, light turbidity, fresh aroma and a sweet and sour taste is available in bottles of 33 cl but also in a bottle similar to that used for champagne (75 cl).

### GROUP GUIDED SITE VISIT TO THE ABBEY

A guided tour to the visibly progressing restoration work is certainly to be recommended where you can listen to the fascinating story of the abbesses, who built up Herkenrode from 1182 until the French Revolution to become the richest women's abbey in Belgium and the Netherlands.

Available: daily  
 Duration 1½ to 2 hours  
 Fee for guide: € 60 - one guide per 25 persons  
 Reservation: Hasselt Tourism, T +32 11 13 95 42, [groepsbezoeken@hasselt.be](mailto:groepsbezoeken@hasselt.be)

Bus parking available.

### TRANSPORT

With bus 23 from De Lijn (The Line): depart the Station in Hasselt and stop at Herkenrode on the Herkenrode route.

By road: take exit 27 direction Herk-de-Stad on the E313 (Antwerpen-Hasselt-Luik). Pass the Carrefour warehouse, turn right and then follow the signs.

### ! THE WIJERS NATURE RESERVE

The numerous nature reserves in Hasselt, Zonhoven and adjacent areas form a green belt that has jointly become known as the Wijers. With its 175 lakes, the nature reserve "De Wijers" forms a 700-hectare water table brimming with rare animal species. This small piece of unspoilt nature offers a pleasant variation of different landscapes. These 'wijers' (earlier name for lakes where people practised fish cultivation) are used for carp cultivation for the abbey.

The Herkenrode abbey site is an ideal starting point to discover this impressive micro-cosmos Information: [www.rllk.be](http://www.rllk.be)



### i INFORMATION AND RESERVATION

Herkenrode Abbey Reflection centre  
 Herkenrodeabdij 1  
 BE-3511 Hasselt-Kuringen  
 T +32 11 22 12 33 (Ivonne Jansen, coordinator)  
[herkenrode.abdij.bezinningscentrumaskynet.be](http://herkenrode.abdij.bezinningscentrumaskynet.be)  
[www.bezinningscentrumherkenrode.be](http://www.bezinningscentrumherkenrode.be)



### i INFORMATION

The 'Holsteen'  
 Hengelhoefseweg  
 BE-3520 Zonhoven

## Herkenrode Abbey Reflection centre

### COME TO REST IN THE SERENITY OF THE ABBEY

In the beautifully restored 18<sup>th</sup> century residence of the abbess you, as a visitor, can experience perfect rest. Since 1972, the abbey is the property of the Sisters of the Holy Tomb. After careful restoration and renovation, they opened up the home as a reflection centre. There you walk through an English landscape park of about 10 ha that is situated on the banks of the Demer.

### i HOSPITABLE HOME

The reflection centre has its own training programs and is open for residential training activities, seminars and workshops for groups and associations.

It is an unique location for people who, individually or in a group, are looking for silence, meditation or contemplation. Or in the words of a previous guest: "If you enter through this portal, it is as if you enter another time dimension".

In as far as the Christian character and calm of the reflection centre are respected, anyone is more than welcome and can, on request, undertake a guided tour to a section of the convent and also visit the museum.

### ? DID YOU KNOW?

The reflection centre has more than 7 conference rooms with a capacity for 6 to 60 persons. The comfortable 29 single and 7 double rooms each with suite facilities. All levels can be reached by elevator. The kitchen serves tasty and healthy meals from restricted menus. The refectory can seat 60 persons.

## The 'Holsteen' in Zonhoven

The Holsteen is a collective name for eight large sandstones. From scientific research it seems that the silicon bearing sandstone, originated locally under special geological circumstances, from sea sand that deposited here 15 million years ago. One stone displays grooves originating from polishing of pre-historical tools and weapons.

Many old items are indeed still found in the immediate vicinity, among others, plugs, scrapers and arrow heads. The Holsteen is the only fixed polishing stone in the Flemish country. From this it becomes evident that the environment was visited by humans from an early stage. A selection of the findings and information on the pre-historical history and the archaeological excavations can be found in the visitor's centre in the Old City hall.

### i INFORMATION

Zonhoven Tourism  
 T +32 11 60 26 19  
[toerismeazonhoven.be](http://toerismeazonhoven.be)  
[www.zonhoven.be](http://www.zonhoven.be)


**i** INFORMATION

Chapel of Spalbeek  
Spalbeekstraat  
(side street of the N2 Hasselt-Diest)  
BE-3510 Hasselt-Spalbeek

## Spalbeek Chapel

In this renovated Chapel of the Holy Elisabeth in Spalbeek you can enjoy some of the beautiful 14th century wall paintings.

**i** OPENING HOURS

- from May to October: on the first Sunday and the third Saturday of these months, the chapel is completely open between 14:00 and 17:00.
- from November to April: on the first Sunday of these months the chapel is completely open between 14:00 and 16:00.
- on the other days of the year, the wall paintings can only be viewed from the foyer.

**i** INFORMATION

You can park in the parking area of the sports hall adjacent to the chapel.

## ‘THEATRE ON THE MARKET’: CRADLE OF INTERNATIONAL TALENT



From 5 to 8 August, the 14th edition of the international open air theatre festival Theatre on the Market takes place in Hasselt. Approximately forty theatrical companies from Europe and further afield will pitch their tents in Hasselt for four days. They will stage musical parades, open air, street and circus theatre. The program mostly includes performances which, apparently, are home-grown. Theatre on the Market after all makes infrastructure available in the Provincial Domain Dommelhof in Neerpelt to theatrical companies to work out their new theatrical performances. So the Theatre on the Market is not only a festival, but also the cradle of new talent.

### OWN PRODUCTIONS

During the past few years, the provincial management made the Provincial Domain Dommelhof in Neerpelt available to local as well as foreign artists to prepare their new theatrical performances. This happens with the financial and logistical support of the Theatre on the Market. So Limburg is the cradle of a number of performances that will conquer the festival world from here.

This year the Theatre on the Market, among others, presents new performances from Circus Ronaldo (BE), Compagnie Rasposo (FR), d'irque & fien (BE), Kurt Demey (BE), Studio Orka (BE) and Theatre Tol (BE).

### THEATRE ON THE MARKET PRACTICAL INFORMATION

#### FREE

Theatre on the Market takes place daily in the centre of Hasselt. Most of the performances take place in the open air, a few circus performances take place in tents. Most performances are free of charge. If an entrance fee is charged, it varies between € 1 and € 10.

#### TICKETS

Can be booked by telephone at  
T +32 11 80 50 02 - [www.theateropdemarkt.be](http://www.theateropdemarkt.be)

## ART-THEATRE-MUSIC



### i INFORMATION

Hasselt Cultural Centre  
Kunstlaan 5  
BE-3500 Hasselt  
T +32 11 22 99 31  
F +32 11 24 32 07  
ccha@ccha.be  
www.ccha.be  
plaatsbespreking@ccha.be



### i INFORMATION

Muziekodroom  
Bootstraat 9  
BE-3500 Hasselt  
T +32 11 23 13 13  
F +32 11 26 28 49  
info@muziekodroom.be  
www.muziekodroom.be



### i INFORMATION

Arts Centre BELGIUM  
Burgemeester Bollenstraat 54 (main site)  
Koningin Astridlaan 81-85 (Open Circuit)  
BE-3500 Hasselt  
T +32 11 22 41 61  
F +32 11 23 26 59  
belgie@skynet.be  
www.kunstencentrumbelgie.com  
www.open-circuit.com

## Hasselt Cultural Centre

You will experience highlights and intriguing confrontations with a number of artists and theatrical companies throughout the season in the Hasselt Cultural Centre, the venue for stage arts, (classical) music and visual arts in Limburg.

### i OPENING HOURS

Go to [www.ccha.be](http://www.ccha.be) for a complete overview of the program and the opening hours.

### TRANSPORT

Free bus H1 direction 'Hospitals' ('Ziekenhuizen')

## Muziekodroom

In the Muziekodroom you find yourself at the centre of the modern, bubbling music scene. In the pop centre you will not only enjoy concerts of established and upcoming bands, but also can participate in a range of musical courses and events.

### i OPENING HOURS

- from Monday to Friday from 10:00 to 23:00.
- Saturday from 9:00 to 19:00.

### TRANSPORT

Free bus H3 direction 'Trichterheide'.

## Arts Centre BELGIUM

Art is the spice of daily life. And as you can cook for yourself or dine out in a restaurant, you may also want to experience or actively participate in art. Both are possible at the BELGIUM Art Centre. You not only stay informed about the latest trends in the artistic world, you can also really form part of the visual arts, film, music, theatre or dance... to performances, heritage, inter-disciplinary creations and festivals.

Look out for current programs on [www.kunstencentrumbelgie.com](http://www.kunstencentrumbelgie.com).

Furthermore, there are also the many interesting projects and activities of Open Circuit, the international production house, situated in the protected buildings 'Huis Hoste' and 'Koloniale Waren', Koningin Astridlaan 81-85. It is the cradle of the multi-disciplinary Open Circuit festivals and a number of exceptional public events (concerts, theatre, heritage...).

### TRANSPORT

BELGIUM Art Centre and Open Circuit is within walking distance of the centre and the station.


**i** INFORMATION

Art Centre Z33  
 Zuivelmarkt 33  
 BE-3500 Hasselt  
 T +32 11 29 59 60  
 F +32 11 29 59 61  
 info@z33.be  
 www.z33.be

## Art Centre Z33

Z33 is an abbreviation of the address of this cultural temple: Zuivelmarkt 33. The Art Centre is situated in the old entrance hall and invites you to enter into dialogue with the designers, artists and commentators. Z33 focuses on design and visual arts via integral and multi-disciplinary projects, exhibitions, workshops, media, film, dance, theatre and music and offers the visitor the chance to actively or passively participate in the modern art life throughout the year.

**i** OPENING HOURS

- from Tuesday to Saturday: Cottage 11 and gallery: 10:00-17:00, Huisje 4 and vleugel '58: 11:00-18:00,
- open on Sundays and public holidays from 14:00 to 17:00.

**€** RATE

- Free. Groups should book a guide in advance.

**i** INFORMATION

Go to [www.z33.be](http://www.z33.be) for a detailed and current program.


**i** INFORMATION

GC Tentakel Zonhoven  
 Kneuterweg 2  
 BE-3520 Zonhoven  
 T +32 11 81 50 61 and +32 11 82 10 07  
 F +32 11 81 87 10  
 tentakel@zonhoven.be  
 www.zonhoven.be/cultuur

## GC Tentakel Zonhoven

At this venue you are set for an evening of relaxation. You can choose from concerts, theatre, exhibitions and other cultural events. Once a month, a Tuesday is the fixed film evening where 'the better' films are shown.

**i** INFORMATION

For complete programs go to [www.zonhoven.be/cultuur](http://www.zonhoven.be/cultuur)

## NATURE



## i INFORMATION

Japanese Garden  
 Gouverneur Verwilghensingel z/n  
 BE-3500 Hasselt  
 T +32 11 23 52 00 (1 April-31 October)  
 T +32 11 23 95 40 (outside this period)  
 toerisme@hasselt.be  
 www.hasselt.eu



## ! TIP

The Japanese Garden regularly organises interesting events. For more information, go to [www.hasselt.eu](http://www.hasselt.eu)

## ! TIP

Easy accessibility by wheelchair users. Assistance available on steeper slopes. There is a railing present along the stepping stones at the waterfall.

# Japanese Garden

Visit the largest (2.5 ha) authentic Japanese Garden in Europe and enjoy an environment filled with inner rest and beauty. An absolute must.

## i OPENING HOURS

- OPEN FROM 1 APRIL UP TO AND INCLUDING 31 OCTOBER
- from Tuesday to Friday from 10:00 to 17:00.
  - Saturday, Sundays and public holidays from 14:00 to 18:00.
  - closed on Easter Sunday.
  - open on Easter and Pentecostal Monday from 14:00 to 18:00.
  - nocturnal visits on 11 August from 20:00 to 23:00.

## € RATE

- € 5 per person
- € 4 per person for seniors and for groups of 15 or more persons
- € 1 per person for school classes.
- free for children younger than 12 years.

\*Last ticket sales: half an hour before closing time.

## 🚌 TRANSPORT

Free buses to the Japanese Garden.  
 One of two possibilities: the city bus H3 (direction Trichterheide) and line 45 (direction Maaseik). Departure is always from the Station Square of Hasselt (Stationsplein van Hasselt) every half an hour on weekdays and on the hour on Sundays and public holidays. You disembark at the Koning Boudewijnlaan stop at the water tower. On the opposite side of the street, you take a step downwards onto the bicycle track, right through and then still a few steps towards the entrance to the garden.  
 Information: De Lijn Limburg, T +32 70 220 200.

On Sundays and public holidays you can also use the shuttle service of the city tram.  
 Information: see page 24.

## 👥 GUIDED TOUR FOR GROUPS

Duration 1 ½ hours  
 Fee for guide: € 60 (for maximum 2 hours) - one guide per 25 persons  
 Reservation: Hasselt Tourism, T +32 11 23 95 42, [groepsbezoeken@hasselt.be](mailto:groepsbezoeken@hasselt.be)

## ? DID YOU KNOW?

No dogs allowed.

## i INFORMATION

GPS-coordinates: OL 5° 21' 23", 70377 / NB 50° 56' 09", 56887



### i INFORMATION

Nature domain Kiewit  
Urban Nature Center  
Kiewitdreef 7  
BE-3500 Hasselt  
Parking in Putvenne Street  
T + 32 11 21 08 49 / 02 60  
F + 32 11 23 12 97  
kiewit@hasselt.be  
www.hasselt.eu

## Nature domain Kiewit

With a spacious 100 ha of natural beauty, the nature domain Kiewit is the green lung of Hasselt. Nature recreation and nature education side by side. Here you will find the oldest natural garden in Flanders and you can enjoy anything from impressive lakes to the 19th century mansion where 'nature point Limburg' is situated. The herb garden and the insect garden with beehives are more than worth your while.

### i OPENING HOURS

- free entrance throughout the year, also for wheelchairs and beach buggies.

### 🚌 TRANSPORT

Free bus H2 direction 'Kiewit'

### ? WALKING IN KIEWIT

At the children's farm, children can learn how to treat animals such as goats, sheep, rabbits, donkeys, chicken, pigs, a farm horse, ducks and geese, swans and guinea-pigs. A map for this purpose is available at € 1.50.

### ! TIP

Natural domain Kiewit organises various educational programs. For more information go to the natural education centre.

## The Garden of Dina Deferme

This attractive garden stretches over four hectares and is divided into garden rooms, each with its own atmosphere. The opulent flower borders change colours each three weeks due to the large collection of roses and fixed plants.

### i OPENING HOURS

- from June up to and including August, every Sunday from 10:00-18:00.

### € RATE

- € 5 per person

### ? DID YOU KNOW?

The profits go to the Belgian Foundation for Burns.

### 🚌 TRANSPORT

Free bus H3 direction 'Stokrooie'

### 👥 GUIDED TOUR FOR GROUPS

Available: on appointment, daily from May to mid-September (at least 20 persons)  
Closed: Monday and Saturday after 16:00  
Duration 2 hours  
Rate: € 7.50 per person (soft drink or coffee and guidebook included)  
Reservation: Mrs.Dina Deferme, T +32 11 25 64 58.



### i INFORMATION

The Garden of Dina Deferme  
Beuze Street 64  
BE-3511 Hasselt-Stokrooie  
T +32 11 25 64 58  
www.deferme.be



### i INFORMATION

The Abbey site in Herkenrode  
Herkenrode  
Herkenrodeabdij 1  
BE-3511 Hasselt-Kuringen  
T +32 11 33 43 70  
F +32 11 33 46 45  
secretariaat@herkenrode.be  
www.abdijsiteherkenrode.be  
www.herckenrode.be

### ! TIP

There are 4 marked hiking trails available at the site. The numerous information signs along the trail will inform you about a number of interesting facts about the special nature area and the abbey. Happy hiking!



### i INFORMATION

Frans Daems  
T+32 13 66 36 48  
frans.daems@skynet.be

## Herkenrode Abbey Herb Garden

The herb garden at Herkenrode is an unique and original contemporary herbal park. It is relaxing and educational and especially attractive for a public varying from professionals to individual visitors. The herb garden consists of educational gardens and gardens for consumption. There are approximately 225 different plants such as medicinal plants, herbal plants, onions and kitchen herbs in each of them. The 200-metre long arbour consisting of about 3500 hornbeams, is unique. Included in the ticket to the herb garden you will receive the AH-guide. This booklet includes, amongst others, information, need-to-knows and recipes about a number of herbs and plants.

### i OPENING HOURS

- the visitor's centre and the herb garden are open from 1 April to 31 October, from Tuesday to Sunday from 10:00 to 18:00.

### € RATE (INCLUDING AN INFORMATION BOOKLET ON THE HERKENRODE ABBEY)

- € 4 per person
- € 3 per person, 65+pass, for youngsters between 12 and 18 years, holders of a teacher's ticket and for groups of at least 15 persons.
- free entrance for children up to 12 years, members of Flanders Heritage Society and Hasselt Out-pass holders.

### ! TAKE NOTE

It is possible that you have to pay a (higher) entrance fee during events. Even with an Out-pass.

### i TICKETS AND INFORMATION

At the visitor's centre (last sale at 17:00).

### 👤 GUIDED TOUR TO THE HERB GARDEN FOR GROUPS

Experienced herborists and herbalists tell the captivating and intriguing story of the herbs and their use by humans throughout the centuries up to today.

Rate: € 3 per person (at least 15 persons)  
Duration 1½ to 2 hours  
Fee for guide: € 60 - one guide per 25 persons  
Reservation: Hasselt Tourism, tel. +32 11 23 95 42, [groepsbezoeken@hasselt.be](mailto:groepsbezoeken@hasselt.be)

## Beehive

### HERKENRODE BEE-HIVE: WORTH A VISIT

On the road to the Herkenrode Abbey, you can visit the new bee hall of the Limburgse Imkersbond (Royal Flemish Bond of Limburg). You can look at the life of bees in all its facets. In clear weather you can see them buzzing around every now and again. Heavily laden with honey and pollen they land on the flight shelf of their box. Also take a look at the exhibition in the classroom.

Open: Every first and third Sunday of the months May, June, July and August, always from 14:00 to 17:00. The entrance is free.



## i INFORMATION

Park Nature & Culture Hasselt  
Runksterkiezel 113  
BE-3500 Hasselt  
T +32 11 27 31 12 or +32 11 76 66 61  
F +32 11 27 29 44  
info@parknatuurcultuur.be  
www.parknatuurcultuur.be



# Park Nature & Culture Hasselt

In the 1.5-hectare Park Nature & Culture Hasselt, you find an intriguing combination of art and bio-diversity: besides around about 120 different types of box bushes, you can admire various pruning tree forms for box bushes, yew-trees and ivy. You can, in a fun and contemporary way, familiarise yourself with examples of old trades (such as crafts, rattan weaving and glass mosaic), but also with the bio-diversity of box bushes and with form pruning.

## Exhibition in 2010

International exhibition of artworks and gnomes. The unique exhibition of gnomes encapsulates an important collection of the German artists Philipp Griebel and Ottmar Hörl as well as from the Dutch artist Rien Poortvliet.

## i OPENING HOURS

- daily from 28 March to 2 November from 10:00 18:00  
Tuesday and Friday only upon reservation.
- from 5 December to 18 March only open over weekends,  
holiday periods and upon reservation.
- closed from 3 November to 4 December:

## € RATE

- € 4,50 per person
- up to 12 years (accompanied by parents) free.
- € 4 per person for groups of 10 or more persons
- € 2 per person for supervised school classes.

## 🚌 TRANSPORT

By bus. Take bus 5 direction Sint-Truiden on the Hasselt Station Square to the 'Runksterkiezel' stop. For the timetable, phone De Lijn Limburg (The Line Limburg), T +32 70 220 200.

## 👥 GUIDED TOUR FOR GROUPS

Fee for guide: € 60 - one guide (maximum 50 persons)  
Reservation: Park Nature & Culture Hasselt, T +32 11 76 66 61 or T +32 11 27 31 12  
E-mail: info@parknatuurcultuur.be

The park - easily accessible for wheelchair users - is particularly well situated in Hasselt, adjoining the Runksterkiezel (between Hasselt and Stevoort) on only 1.5 km from the Outer ringroad of Hasselt, with a bus stop only 200 meters away next to the bicycle route network of Limburg (between interchange 96 and 177). The pavilion or cosy terrace invites you for a drink and offers a beautiful view of the park.

## ? DID YOU KNOW?

Dogs on leashes are allowed.  
Ample free parking.


**i** INFORMATION

**GARDEN 'T ZONHOF**

Donkeindeweg 110  
BE-3520 Zonhoven  
T +32 11 82 49 79  
fernand.reniers@skynet.be  
www.zonhof.be

**GARDEN VANDECRUYS FAMILY**

Donkeindeweg 116  
BE-3520 Zonhoven  
T +32 11 82 49 42  
info@tuinvandecruys.be  
www.tuinvandecruys.be

## Open Gardens in Zonhoven: 't Zonhof and Family Vandecruys

A stone's throw from one another, you can discover two beautiful gardens, each with its own 'specialities' and charm. These gardens display the beautiful things you can create, even in the midst of buildings. The gardens reveal quite a few surprising elements such as enticing corners and beautiful walkways. A garden lake emits a tranquillising feeling, but is simultaneously a source of life and beauty.

**i** OPENING HOURS

- open garden days every Sunday in June  
and the first two Sundays in July from 10:00 to 18:00

**€** RATE

't Zonhof € 3 per person.  
Family Vandecruys € 2.50 per person.

## Nature walks

**DISCOVER THE WIJERS**

The Wijers is a green belt of the nature reserves in Hasselt, Zonhoven and the neighbouring municipalities, which, with its 1175 lakes, forms a 700-hectare water level brimming with rare animal types.

This piece of unspoilt nature offers a pleasant variation of different landscapes and in truth, it is an impressive micro-cosmos awaiting discovery! It is home to rare types such as the tree frog and the great bittern but also the stilt and many other water birds. Conifer forests, heather areas, streamed forests, pastures and oak areas and wooden dams colour the horizon.

This is a dream area for both the ordinary hiker as well as the nature lovers. Entrance at the Wijers is free, but to inform hikers of the route, all of different paths have been clearly signposted and defined.

**HIKING MAPS FOR 'DE WIJERS'**

- Platwijers: be fascinated by the hundreds of lakes (Hasselt/Zonhoven)
- Bokrijk-Kiewit: nature in the heart of Limburg (Hasselt/Genk)
- De Teut: purple heather with a centuries old history (Zonhoven)
- De Maten: an historical wijer landscape (Genk/Diepenbeek)
- Hengelhoef-Ten Haagdoornheide: green oasis set in purple heather marshland (Houthalen-Helchteren)
- Bolderberg-Viversel: lakes and hills with a rich history (Heusden-Zolder)
- Kelchterhoef-Ten Haagdoornheide: white estates hidden among stately trees (Houthalen-Helchteren).





#### **i** INFORMATION

Regional Landscape  
Lower Kempen  
Grote Baan 176  
BE-3530 Houthalen-Helchteren  
T +32 11 78 52 59  
F +32 11 83 21 02  
info@rlk.be  
www.rlk.be

#### **NATURE HIKE BOKRIJK-KIEWIT**

In the Wijers, at the place where Domain Kiewit and Domain Bokrijk are situated, you discover an intriguing microcosm of birds, insects and fungi. If lucky, you may encounter a few Galloways – an old Scottish cattle breed – or a rare water plant. Whilst experiencing this modern jungle first hand, you may find many club tracks, platforms, pools and viewing decks. There are also signposted routes varying from 1.5 – 4 – 6 and 9.5 km. The hiking route map costs € 1.50 and is for sale at Hasselt and Zonhoven Tourism respectively.

#### **NATURE HIKE PLATWIJERS HASSELT-ZONHOVEN**

There are only five signposted hiking routes in the nature reserves Platwijers and Kolberg that remind you of the enjoyable nature classes from your childhood. The hiking routes are from 4.5 to 12.5 km long and take you along a number of lakes previously used by the Abbey of Herkenrode for fish cultivation. The hiking map is available from Hasselt Tourism, Zonhoven Tourism or at the Regional Landscape Lage Kempen at € 1.50.

#### **THE TEUT NATURE WALK IN ZONHOVEN**

In the Teut you still find purple heather to become lyrical about. You also get a piece of centuries-old history as bonus! Discover the unique silence and vastness of the heather area that is varied with pools. Moreover, here you come to know everything about the mysterious pre-historic Holsteen. The hiking map is available from Zonhoven Tourism at € 1.50.

Info: Zonhoven Tourism, T +32 11 60 26 19

#### **GUIDED THEME WALK IN THE WIJERS FOR INDIVIDUALS**

If you want to discover the beauty of this unique piece of nature to the full, join experienced guides on the monthly hikes with a specific theme (fungi, amazing plants, water world, etc...) Moreover, there are five pairs of binoculars available during these trips so that you really do not have to miss anything. Each hike is between 4 and 6 km long and lasts a maximum of two hours. Participation is free. Request the hiking calendar from Zonhoven Tourism.



## OUT AND ABOUT



## Out and about with the city tram

### GUIDED CITY TOUR FOR GROUPS

A guided tour in and around the city centre with the city tram, that really is a fun way of seeing Hasselt! You depart from the Grote Markt (Big Market), Kolonel Dusartplein (Colonel Dusart square), Cultuurcentrum (Cultural centre), next to the station or by appointment.

Available: daily

Duration 50 minutes

Rate: € 4 per person, at least 25 and maximum 47 participants

Fee for guide: € 60

Reservation: Hasselt Tourism, T +32 11 23 95 42, [groepsbezoeken@hasselt.be](mailto:groepsbezoeken@hasselt.be)

### COMBINATION TICKET CITY TRAM AND JAPANESE GARDEN

You can go to the Japanese Garden on the same tram. A special combination ticket takes you from the Grote Markt (Big Market) to the Japanese Garden and back. Entrance fee to the Japanese Garden included. For sale at Hasselt Tourism, the Japanese Garden and from the tram driver.

From 1 April to 31 October, (\*) (\*\*)

Every Sunday and public holiday (not on Easter Sunday and Sunday 10 October 2010)

Depart from the Grote Markt (Market Square) at 14:00, 15:00, 16:00

Depart from the Japanese Garden at 14:30, 15:30, 16:30

(\*) in July and August: daily, except Mondays

(\*\*) Also open during the Easter holidays on: 5-6-7-8-9-10-11-13-14-15-16-17-18 April 2010.

### RATE

- € 8 per person

## Discover Zonhoven by covered wagon

A relaxing trip in a covered wagon is a great way to explore the natural beauty of Zonhoven and the surrounding area. The waggoner gladly shares information along the way. There are three spring-loaded covered wagons, each with a 15-adult capacity, available.

### INFORMATION

Reservations: Jos Van Vlierden, Sint-Kwintens-Heideweg 33, BE-3520 Zonhoven, T +32 11 82 31 94 or +32 473 22 05 04.


**i** INFORMATION

Aero-Kiewit  
Luchtvaartstraat 100  
BE-3500 Hasselt  
T +32 11 21 25 50  
[www.aero-kiewit.be](http://www.aero-kiewit.be)


**i** INFORMATION

Balloonist Bas Valère  
Melbeekstraat 46  
BE-3500 Hasselt  
T +32 11 27 27 60  
T +32 475 57 73 02  
[info@balloonessentials.be](mailto:info@balloonessentials.be)  
[www.balloonessentials.be](http://www.balloonessentials.be)



## Airfield Aero-Kiewit

Want an introductory flight at Aero-Kiewit? That is possible, on the oldest airfield in the country. Your highest expectations will surely be met by the dizzying views! We recommend that groups book in advance.

## Ballooning over Hasselt and environs

If you first want to take a leisurely view of Hasselt from the air, the best is to book a balloon trip. Four passengers can, together with the pilot, partake in a soothing trip on the rhythm of the elements. The wind pushes you hither and thither, but you still experience the unique sensation of floating through the air in absolute silence and enjoy a feast for the eyes. Weather permitting, this trip can be undertaken throughout the year. Set at least three hours aside and provide yourself with leisure clothes because the landing can sometimes be harsh and sometimes occurs in pastures or in fields. The actual flight lasts one hour. And then you can sing: 'Up up and away in my beautiful balloon...'

**€** RATE

- € 150 per person

**i** INFORMATION

After the trip you can even bathe in the afterglow with a glass of champagne. You will receive an air baptism certificate and an enjoyable local product from Hasselt as a souvenir.

## Vespa route

If you enjoy being immersed in trendy city spheres, then you definitely have to buzz through the Capital of Taste on a Vespa!

**i** INFORMATION

Surf to [www.vesparoute.com](http://www.vesparoute.com)



## Spontaneous bicycle fun

You see so much more by bicycle. Come rest and discover Hasselt and Zonhoven with another form of transport. You discover these municipalities on your two wheeler via a number of attractive bike routes and enjoyable places in nature.

### CYCLE ROUTE NETWORK LIMBURG

Cycling is nowhere as pleasant as in Limburg. The cycle network encapsulates three large bicycle areas: Kempen and Maasland, Haspengouw and Kempen in Limburg. For the cycling map and information on the routes you can contact Hasselt Tourism and Zonhoven Tourism. For an enjoyable ride, you simply jump onto the saddle.

#### ? DID YOU KNOW?

You may park your bicycle for free for 9 to 18 hours behind the city hall, next to the Groenplein. This however does not apply on Sundays and public holidays.

#### i RENT A BICYCLE IN HASSELT

If you want to rent a bicycle in Hasselt, you can contact the following:

- at the Fietspunt Hasselt (Bicycle spot), near the station, you can book a bicycle throughout the year as long as you book one day in advance by phoning the toll free number 0800 96967 (option 2). From abroad the number is +32 495 52 42 26.
- there are a number of loan bicycles available for free from the town bikeshed supervisors behind the city hall, daily between 9:00 and 17:00, on Saturday from 10:00 to 17:00. Not valid on Sundays and public holidays. Reservations are not possible.
- renting tandems, city and mountain bikes.  
Information and reservation: [www.velo-rent.be](http://www.velo-rent.be) - T +32 89 38 65 86 or +32 497 12 80 60.

### MOUNTAIN BIKE ROUTE IN THE MIDDLE OF LIMBURG

Are you more sports minded? The mountain bike network in the Central Limburg (Midden-Limburg) lets you get acquainted with the beautiful nature of the Central Limburg (Midden-Limburg) in a sporty fashion. The network consists of three separate routes and offers a rich variation between bushy areas, beautiful heather landscapes, pastures and pools. You can download these GPS tracks via [www.limburg.be/sport/mountainbiketochten.html](http://www.limburg.be/sport/mountainbiketochten.html)

#### € RATE

€ 2 via Zonhoven Tourism.

### SCHANSEN ROUTE ZONHOVEN

Exploring the history on a bicycle, entirely at your own pace, while the natural beauty passes you by, is the ultimate form of relaxation. A good example of this is the Trench (Schansen) route next to the settlement areas consisting of 4 trenches (primitive Medieval defence positions) and numerous other sights worth seeing from the rich past of Zonhoven.

#### € RATE

- The route description with the route plan: € 1 via Zonhoven Tourism.

#### ! TIP

If you arrive in a vehicle, the free parking next to the church square in Zonhoven centre is the ideal point of departure.



## Spontaneous bicycle fun

### ! TIP

The centre of Hasselt or the Canal Reservoir (Kanaalkom), is situated next to interchange 96 on the bicycle route network, the Japanese Garden next to interchange 97.

### 👥 GUIDED BICYCLE TRIPS FOR GROUPS

There are a surprising number of cycling possibilities in Hasselt and vicinity. For example, you can book a cycling trip on the most recently constructed cycling paths in the capital of Limburg. There is a wide range of cycle routes on offer, so there's plenty choice. Absolutely recommended are the Van Veldeke route (40km), Kiewit route (30 km), Herkvallei route (30 km), Kastelen route (Castle route) (45 km) and the old and new Hasselt (25 km).

### € RATE

- Fee for the guide: € 60 for the first two hours subsequently € 25 per extra hour per guide.

### i INFORMATION AND RESERVATION

Hasselt Tourism  
T +32 11 23 95 42  
groepsbezoeken@hasselt.be



## Theme walks

### HISTORICAL CITY WALK

Discover Hasselt on foot via an enjoyable, educational city walk along the most important historical sights in the city. Round every corner of the city, a surprise awaits. Hasselt Tourism gives a simple, but well thought-through signposting in a 2-hour walk. Riveted plates with the symbol of Hasselt the hazelnut have been fitted onto the footpaths. The point of the nut indicates the walking direction. Apart from this, about 40 wall plates will help you find your way through the intriguing history of the city. In short, an unique route packaged into a handy guide.

An unique walking booklet with the city plan, the indicated route, beautiful photos and the complete description is available from Hasselt Tourism. The brochure is also available in French, German and English.

### € RATE

- € 2,50

### ? DID YOU KNOW?

There are quite a number of theme walks available in brochure -form in Hasselt, for example the jenever walk, women's walk, statue route, children's walk, fashion and design guide, lattice house route and 11th Line Regimental route. The brochures are for sale for € 2.50 from Hasselt Tourism.



### i INFORMATION

Limburgia Shipping  
 Graaf de Brigodestraat 1  
 BE-3500 Hasselt  
 T +32 11 31 55 73  
 F +32 11 59 19 97  
 info@rederijlimburgia.be  
 www.rederijlimburgia.be

## Boat trip on the Albert Canal

Not only can you explore Hasselt on foot or by bicycle, but also on the water. For that purpose the shipping company Limburgia organises an intriguing, 2-hour long cruise from the shipping wharf behind the Goeverneur Verwilghensingel. The captain awaits you from 13:00. Departs daily at 14:00.

Available: every Sunday during the months of July and August with the exception of 15 August. Embarkation from 13:00, departure at 14:00.

### € RATE

- € 7.20 per person - € 6.70 per person discount price for seniors and handicapped people.
- € 5 per person aged 3 to 12 years.
- € 6.50 per person for groups of 10 or more persons

### ? DID YOU KNOW?

- a minimum of 15 persons on board before we can sail!
- free parking at the back of the Terminal.
- landing stage and toilet adapted for standard wheelchairs.
- pancakes available on board on Sundays.
- reservation not required, only for groups larger than 10!

### ! TIP

Partake in a floating recreational festival, an evening enjoyed on the water or an extended brunch on board, a day cruise maybe? Request the brochure for special arrangements from Shipping Company (Rederij) Limburgia.

## Sani station for motor homes

Visitors in motor homes can definitely use the camping sites in the neighbouring municipality Zonhoven (see page 46). There is indeed a sani station available at the parking at the back of the Alverberg sports hall situated on the parallel road next to the Herkenrodesingel - that is the large ring around Hasselt - diagonally across from the Carrefour - close to exit 27 on the highway E313 Antwerpen-Hasselt-Luik. The sani station enables you to empty the fixed or portable refuse water tank or the toilet and also to take in clean water. It can only be activated by a € 2 coin.





# Mobility and accessibility

## FREE BUSES IN HASSELT

He who refers to Hasselt, refers to free city buses. The city, over the past few years, invested heavily in mobility and accessibility, with special attention to public transport. With the bus you are on the right track to Hasselt from all municipalities in Limburg as well as Maastricht. Moreover, once in Hasselt, everyone travels for free with the bus on all city lines (see the diagram on page 30).

## HASSELT

### • FREE CITY BUSES

On the half hour (on Sundays and public holidays on the hour) the free lines H1, H2, H3, H4, H5, H7, H8, H9 depart direction residential areas, sub-sectors, Hasselt-Center and a number of tourist attractions, nature reserves and sights from the Stationsplein.

### • FREE BOULEVARD SHUTTLE BP

This bus includes all stops along the small ring and passes the station each 5 minutes. Does not operate on Sundays and public holidays.

### • FREE CENTRE SHUTTLE CP

This bus links the station with the Grote Markt every ten minutes. Does not operate on Sundays and Public holidays.

### • FREE EVENING LINE

Daily, after 20:00, on weekdays and on Saturday and Sunday, the Evening line takes you from the centre of Hasselt to each and every stop on the city net (situated in Greater Hasselt). Depart Stationsplein. You can also depart from the stops along the Groene Boulevard.

### • FREE LINE 45

Between the train and the bus station and the 'Provinciehuis' Universiteitslaan, line 45 is also free to everyone. En route there are attractive attractions such as covered and open air swimming pools, the Kapermolen park with skate park, the Japanese Garden, the Grenslandhallen, Ethias Arena, Plopsa indoor and Kinopolis.

## ZONHOVEN

You can easily travel from Hasselt by car via the N74 (direction Eindhoven) to Zonhoven. You can also reach Zonhoven via the highway E314 (exit 29). There are regular buses departing Hasselt for the centre of Zonhoven.

## INFORMATION BUS

De Lijn Limburg, T +32 70 220 200 or [www.delijn.be](http://www.delijn.be)  
There is a De Lijn shop on the Stationsplein.

## INFORMATION TRAIN

NMBS Railways  
Info local travel, T +32 2 528 28 28 (7 days out of 7)  
Info: [www.nmbs.be](http://www.nmbs.be)

## ? DID YOU KNOW?

Useful information for any one travelling by car to Hasselt.

- Traffic and parking information:  
Traffic department, Stad Hasselt,  
T +32 11 23 93 42

- Information about paid parking garages:  
[www.parkings-hasselt.be](http://www.parkings-hasselt.be)

## ! TIP

At Tourisme Hasselt, you can borrow a wheelchair for free.  
Rather first make a reservation at  
T +32 11 23 95 40.

# Plan free city buses

## H1 'Kermt/Spalbeek'

Station Herkenrode Abbey Kermt Spalbeek

## H1 'Ziekenhuizen'

Station Virga Jesse Hospital Cultural centre Salvator clinic

## H2 'Kiewit'

Station Swimming pools/Kapermolen Park Domain Kiewit

## H2 'Alken'

Station Sint-Lambrechts-Herk Alken

## H3 'Stokrooie'

Station Kuringen Dina Deferme Stokrooie

## H3 'Trichterheide'

Station Japanese Garden Grenslanhallen Plopsa indoor Trichterheide

## H4 'Stevoort'

Station Kuringen-centre Schimpen Mariaburcht Stevoort

## H5 'Singellijn'

Station Kapermolen Park Japanese Garden Salvator Clinic Runkst

## H7 'Runkst'

Station Runkst Cemetery Sint-Hubertusplein Sports hall

## H8 'H.Hart'

Station Heilig-Hartkerk Sports hall Alverberg P+R

## H9 'Rapertingen'

Station Sint-Jansplein Godsheide Wolske Rapertingen

## CP 'Centre Shuttle' ('Centrumpendel') (does not operate on Sundays and public holidays)

Station Grote Markt Station

## BP 'Boulevard Shuttle' ('Boulevard pendel') (does not operate on Sundays and public holidays)

Station Leopoldplein Kunstlaan Kolonel Dusartplein Molenpoort Diesterpoort Station

## Line 45 'Genk-Maaseik' (free to Provinciehuis stop)

Station Japanese Garden Grenslanhallen Kinopolis Plopsa indoor Provinciehuis



## Vehicle routes

### HASPENGOUW MOTORING ROUTE

Especially for all car and motor vehicle lovers three renovated motoring routes were designed in Haspengouw. Rolling landscapes, fruit trees, picturesque church towns, castles, estates, golden acres, surprising fauna and flora, delicious local products... You'll see all of this along the way. The route is completely signposted and the accompanying guide bursts with visiting and hiking tips. Useful. Because even the most incorrigible drivers wish to stretch their legs at some time or another. This vehicle route brochure is for sale for € 5 from Hasselt Tourism and Zonhoven Tourism.

### GREEN METROPOLE BICYCLE AND MOTORING ROUTE

The green metropole is a cycling and motoring route between Belgium, the Netherlands and Germany. Both routes are linked over a stretch of about 250 km to more than seventy leisure activities on the themes of mining, nature and culture. The routes also pass through Hasselt.

Information and route plans on [www.groenmetropool.eu](http://www.groenmetropool.eu)

### MOTORING ROUTE IN THE MIDDLE OF LIMBURG

The tourist motoring route 'Midden-Limburg' also passes through Hasselt and Zonhoven and links the sights of eleven municipalities in Limburg with one another (257km in total). In the accompanying brochure you will also find several hiking and excursion tips. The vehicle route brochure is for sale at € 4.50 from Hasselt Tourism and Zonhoven Tourism.



## In the heart of Europe... the Euregio Maas-Rhine

Maastricht, Heerlen, Hasselt, Aken and Luik are five European cities each with its own history and character, and with one common aim (Europe) and one joint characteristic: they all represent intriguing experiences from the past, present and future.

### **i** INFORMATION

[www.5-plus.eu](http://www.5-plus.eu)

## Twin cities

Hasselt is twinned with Detmold (DE), Itami (Japan) and Mountain View (USA). There is also a cooperation agreement with 2 cities in Morocco: Missouri and Outat-Oulad-El-Haj.

Zonhoven is twinned with Gayndah (Australia).

## SHOPPING in HASSELT



### i INFORMATION

www.hasseltdewinkelstad.com  
www.handelsgidshasselt.be  
Ask for a free shopping guide from Hasselt Tourism..



You never leave a city such as Hasselt empty handed. Do a little window shopping, snuffle about in some of the exclusive boutiques and discover the latest trends in the Capital City of Taste. The ideal destination for a 'shop till you drop' weekend!

## Fashion and Shopping city

It does not always have to be London, Paris or Milan. Hasselt is renowned as one of the most exclusive shopping and fashion cities in Belgium. Here you will also find a tremendous and surprising variety. Most of the shops in Hasselt are open from Monday to Saturday from 10:00 to 18:00. The shops are closed on Sundays and public holidays. Hasselt and Zonhoven do not have late night shopping. Special shopping activities are organised in Hasselt during the first weekend of April and October.

## Antiques and markets in Hasselt

In Hasselt you can go to the market on Kolonel Dusartplein on Tuesday and Friday morning. The square can be reached by bus with the free Boulevard shuttle. The art market is situated behind the City Hall from mid July to end of August on Saturdays from 14:00 to 18:00. For more information, T + 32 11 22 19 19. And there are also the antique, brocante and curio market from April to the beginning of November, every Saturday from 8:00 to 13:00 at Kolonel Dusartplein in Hasselt.

### i INFORMATION

T +32 496 58 74 02

## Markets in Zonhoven

Every Sunday morning you can enjoy a sociable Sunday market in the heart of Zonhoven. You can leisurely visit among the stalls of around 80 market traders. You will find all sorts of articles, from clothes to food, household products, poultry and much more. Some thing for everyone! Afterwards you can relax on a terrace or in a cosy restaurant in the pleasant town centre. You can also find a number of little shops, boutiques and speciality outlets in the centre.

Every Sunday morning, from 8:00 to 13:00 in the centre of Zonhoven.  
Annual market on Sunday 14 March 2010 in the centre of Zonhoven.

## 'Hasselen' ('Hassle') with the Hasselt voucher

Hasselt means enjoying sociable shopping streets, atmospheric restaurants and terraces, intriguing culture, surprising nature and much more. One day of 'Hasselen' will suit everyone very well. Do you want to introduce someone else to the typical atmosphere of Hasselt? This can be done with a Hasselt voucher. With this gift voucher you can visit more than 100 shops and catering outlets in Hasselt. A lovely gift that ensures a day of top entertainment in Hasselt. The gift vouchers have values of € 5, 10, 20 or 50 and are only for sale at Hasselt Tourism in Lombaardstraat 3.

### i INFORMATION

T +32 11 23 95 40

## CHILD FRIENDLY



## i INFORMATION

Plopsa Indoor Hasselt  
(Grenslantheallen site)  
Gouverneur Verwilghensingel 70  
BE-3500 Hasselt  
T +32 11 29 30 40  
F +32 58 42 01 39  
info@plopsa.be  
www.plopsa.be

## Plopsa Indoor Hasselt

The Studio 100 figures Samson & Gert, Kabouter Plop, Piet Piraat, Mega Mindy and Bumba welcome you in the only covered theme park in Belgium. In an area of 10,000 m<sup>2</sup> you will find twenty attractions that all indeed have something to do with Studio 100: A stormy ride with Piet Piraat on the Scheve Schuit or in the Pirate Run, a dizzying descent down the lighthouse, a visit to the Playtree of Gnome Plop, a glide in the Pendulum mill... Even from scratch, Studio 100 Café was fitted out in true Hollywood style. When the weather is nice you can play outside in the playground or in the traffic park

## i INFORMATION

Before departure, phone the 'Plopsa-druktelijn' ('Plopsa congestion line') for information about accessibility, T +32 70 69 69 70

## ? DID YOU KNOW?

With the train to Plopsa Indoor Hasselt? No problem and also a lot more favourable! B-Day trip posters are for sale at all the larger Belgian stations ([www.b-dagtrips.be](http://www.b-dagtrips.be))

## i FREE BUSES TO PLOPSA INDOOR HASSELT

One of two possibilities: the city bus H3 (direction Trichterheide) and line 45 (direction Maaseik). Always departs from Stationsplein in Hasselt on weekdays on the half hour and on Sundays and public holidays on the hour. You disembark at the Provincial house on Universiteitslaan. Bus timetable: De Lijn Limburg, T +32 70 220 200.

## City tour with the children's cart

Children's legs tire easily. Especially if they go along shopping, window shopping or just walking past, squares and facades. But with the children's cart that can be borrowed at the Groenplein behind the city hall, things can soon again become an adventure and an expedition soon becomes a true expedition.

## The biggest ramp in the Benelux

No no, we do not mean that something serious happens in Hasselt. The biggest ramp can be found in front of the largest outdoor skate park of the Benelux with a central bowl (concrete pit of 40 by 50 meter), flanked by eight extra zones where skaters, skeepers and BMX'ers feel at home. A centre with street elements, a basketball field, couches, goals for ice-hockey, etc, complete the 'ramp'. Entrance to the skate park is free.

Nearby - just about 200 meters from the Kolonel Dusartplein - there is only the sound of water. You can swim indoor in the city swimming pool or in the open air in the Kapermolen Park, both at Elfde Liniestraat 21.



## RELAXATION



### i INFORMATION

Grenslandhallen Ethias Arena  
Gouverneur Verwilghensingel 70  
BE-3500 Hasselt  
T +32 11 29 94 99  
F +32 11 29 94 09  
info@grenslandhallen.be  
info@ethiasarena.be  
www.grenslandhallen.be  
www.ethiasarena.be

### i INFORMATION

Events Hall Den Dijk  
Rozenkransweg 4  
BE-3520 Zonhoven  
T +32 11 81 05 03  
sport@zonhoven.be  
www.zonhoven.be/sport



### i INFORMATION

Kinopolis  
Via Media 1  
BE-3500 Hasselt  
T +32 11 29 86 00  
F +32 11 29 86 06  
info.hasselt@kinopolis.com  
www.kinopolis.com

### i INFORMATION

Versuz  
Slachthuiskaai 6  
BE-3500 Hasselt  
T +32 11 22 26 95  
info@versuz.be  
www.versuz.be

## Grenslandhallen Ethias Arena

Ethias Arena and Grenslandhallen in the mean time have become known far across the provincial borders. Every year you can attend a variety of events that should enchant any age group, anything from contemporary and flashing to classic and relaxed. Concerts, sporting events, theatre productions, shows and spectacles, thematic happenings, fairs and exhibitions, entertainment, dance-events and celebrations... everything you can find in the Grenslandhallen or the Ethias Arena, an ideal stop.

### i INFORMATION

Consult the website for more information and a recent overview of the events.

### 🚌 TRANSPORT

Free bus H3 direction 'Trichterheide'.  
Free bus 45 direction 'Maaseik'.  
Route description can also be found on our website.

## Events Hall Den Dijk

In the heart of Zonhoven, close to the City Hall, you will find the showpiece of the sport infrastructure of Zonhoven: Evenementenhal Den Dijk (Den Dijk Events Hall) The hall is home to many sport clubs in Zonhoven, but you can also attend a number of other events such as performances, exhibitions, receptions, meetings, festivals, etc.

## Kinopolis

In the super modern cinema complex with over 14 theatres you can enjoy the latest releases under ideal circumstances. With or without popcorn.

### i OPENING HOURS – INFORMATION – RATE

Go to [www.kinopolis.com](http://www.kinopolis.com) or phone the info line T 0900 00 555.

### 🚌 TRANSPORT

Free bus H3 direction 'Trichterheide' – Free bus 45 direction 'Maaseik'.

## Mega disco Versuz

You can always find something good at the mega discotheque Versuz, on Monday, Thursday and Saturday evenings. You can dance to the most modern music and flashing beats or you can listen to established deejays or to new daredevil dance floor stormers that entertain you with their own views of the modern music and dance scene.



## Addresses-Sport & Recreation

In Hasselt people believe in the principle of a healthy body houses a healthy spirit. It then also offers everything anyone could need as far as sports are concerned.

### ACTION CART

Walenstraat 32a  
3500 Hasselt-Kiewit  
T +32 11 22 22 88  
www.actionkart.be

### SPORTDIENST HASSELT

T +32 11 23 94 50  
www.hasselt.be

### ACTION PARK

(sports wood, traffic park,  
adventure for the handicapped)  
Tulpinstraat 40-42  
3500 Hasselt-Kiewit  
T +32 11 23 94 50

### FLANDERS NIPPON GOLF & BUSINESS CLUB HASSELT

Vissenbroekstraat 15  
3500 Hasselt  
T +32 11 26 34 82  
www.flandersnippongolf.be  
18-hole course (hcp required - hcp 36)  
9-hole course (no golf licence required).

### GOLF MEETING POINT

T +32 11 26 34 80  
www.golfmeetingpoint.be

### ICE RINK DE SCHAEVERDIJN

Gouverneur Verwilghensingel 13  
3500 Hasselt  
T +32 11 30 08 00  
www.bloso.be

### SKATEPARK HASSELT KAPERMOLEN PARK

Elfde Liniestraat 21  
3500 Hasselt  
T +32 11 23 94 50

### PRETLAND

(covered playground)  
Rechterstraat 69  
3500 Hasselt  
T +32 11 26 21 31  
www.pretland.be

### CITY SWIMMING POOL

Elfde Liniestraat 21  
3500 Hasselt  
T +32 11 23 94 50

### SPORTCENTRUM BASVELDEN

(field and indoor football, beach soccer,  
baseball, tennis, mini tennis, athletics)  
Muizenstraat z/n  
3520 Zonhoven  
T +32 11 81 05 95  
Sport service: T +32 11 81 05 89

### SPORTCENTRUM OLYMPIA

(bowling, climbing, squash, snooker,  
pool, fitness)  
Kuringersteenweg 242  
3500 Hasselt  
T +32 11 25 30 31  
Indoor climbing wall: T +32 11 25 63 30  
www.oly.be

### HEALTHCITY HASSELT

(fitness, squash, sauna)  
Badderijstraat 19  
3500 Hasselt  
T +32 11 22 84 81

### BOWLING CHAMPION

Zavelstraat 71  
3520 Zonhoven  
T +32 11 81 36 21  
www.bowlingchampion.be



### i INFORMATION

Zebracinema Entrance  
Zuivelmarkt 33  
BE-3500 Hasselt  
T +32 11 29 59 85  
F +32 11 29 59 86  
zebra@limburg.be  
www.zebracinema.be

## Zebra Cinema

Meanwhile roll out the red carpet! The Zebra Cinema screens good and interesting, quality films, with special attention to the European film and young promising directors, from a mixture of mainstream and cinefile gems. Wednesday at 17:30 and 20:15.

### DOC'Z

Each Thursday at 20:15 you can enjoy the most talked about, stubborn and revealing quality documentaries in the Zebra Hall, regularly linked to current exhibitions in the Art Center Z33.

### KINEPOLIS

Each Thursday at 20:00 in the Zebra Cinema film in Kinopolis Hasselt.



## ATTRACTIONS IN THE VICINITY

### CIRCUIT ZOLDER - HEUSDEN-ZOLDER

For budding F1-pilots, the Circuit Zolder is one place where you will not be caught and fined for speeding. But you can also go onto the BMX track or the cross field circuit. Put on pilot's gloves or buckle-up and put your foot down! For the passive motor sport lover there are a number of competitions that visit the circuit and draw large numbers of spectators.

Circuit Zolder, T + 32 11 85 88 88, [www.circuit-zolder.be](http://www.circuit-zolder.be), Exit 27 E314 and Exit 26bis E313

### DOMAIN BOKRIJK - GENK

The Bokrijk domain will catapult you back in time. You become immersed in the day-to-day life of our ancestors. Follow a lesson in the class of the master, listen to the thundering sermon of the pastor and see how the constable tries to undermine the socialists. In the arboretum you will discover a rich variety of flowers and plants, you can stroll through the bushes and set the rascals free onto the largest playground in Belgium. And afterwards there is always the opportunity to enjoy a drink, a pancake, a snack or indeed a dinner.

Domain Bokrijk, T + 32 11 26 53 00, [www.bokrijk.be](http://www.bokrijk.be)

### EUROPLANETARIUM - GENK

Frank Dewinne did not only see them sitting behind the frame of the ISS, but for the rest, the sky does not hold any secrets when you look at the universe from where you sit in a comfortable seat watching the gigantic universe through a real telescope. Who knows, there may yet be a planet or star circling around that may be named after you.

Europlanetarium, T +32 89 65 55 55, [www.europlanetarium.com](http://www.europlanetarium.com)

### GALLO-ROMAN MUSEUM - TONGEREN

Now everything is a whole lot simpler, but once upon a time we used to upset Italy with demanding figures. Naturally it is not about football, but about the battle between the Eburones and Julius Caesar. You will find lots of information on that, but also beautiful displays, surprising multi-media presentations and brilliant objects back in the Gallo-Roman Museum in Tongeren. The world of the Old Belgians, the Celts and the Romans returns to life in a breathtaking way in the completely renovated museum. Until 13 June 2010 you can also view the following exhibitions: 'Ambiorix: King of the Eburones'. You come eye to eye with Ambiorix, Julius Caesar and other figures that grab the imagination. More than 600 top objects from locally and abroad bring the Celts to life again.

Gallo-Roman Museum, T +32 12 67 03 40, [www.galloromeinsmuseum.be](http://www.galloromeinsmuseum.be)

### CASTLE NIEUWENHOVEN - SINT-TRUIDEN

A stone's throw away from Sint-Truiden you will find the Nieuwenhoven Castle, 1000 years old, but with hyper-modern ideas about attitude to life. In this beautiful castle, situated in a brilliant green oasis, people lived according to the Perma culture. This is a design method that gets its inspiration from nature to create living environments, that display the diversity, stability and the resilience of natural ecosystems. Interesting, intriguing, inspiring? You will have to take a look and experience it for yourself in Sint-Truiden.

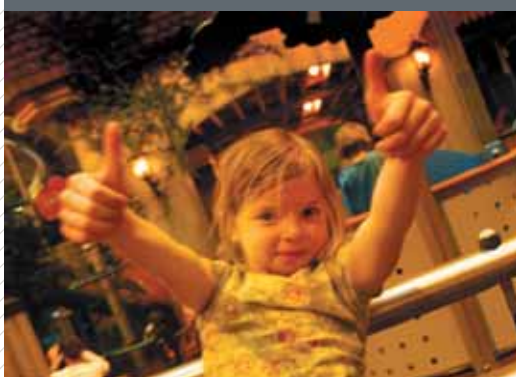
Nieuwenhoven Castle, T +32 11 68 64 10, [www.kasteelnieuwenhoven.be](http://www.kasteelnieuwenhoven.be)



### LAND COMMANDERY ALDEN BIESEN – BILZEN

The impressive land commandery with beautifully laid out gardens sometimes was once the base of the German Order. Today it is a cultural centre of the Flemish Community. A visit to the apartment of the Grand Commander in the moated castle, the church, the French gardens and the new visitor's centre is highly recommended.

Land Commandery Alden Biesen, T +32 89 51 93 93, [www.alden-biesen.be](http://www.alden-biesen.be)



### PARK MOLENHEIDE – HOUTHALEN-HELCHTEREN

The Park Molenheide is worth a day trip. The indoor swimming paradise 'Aquapolis' and the indoor playground 'Kids Valley' are already known far beyond Houthalen. In the meantime you can visit a completely new attraction: 'De Mijn'. This indoor mini golf, that is inspired by the mining history of Houthalen, is a complete thematic golf course where both light and sound play an important role. You descend down a mine via exciting mine shafts, glistening diamond mines and eighteen holes later you eventually return to the main floor. An unique attraction in Europe! A winner of the The Award 2009 (prize of the international Themed Entertainment Association for the best thematic attractions).

Park Molenheide, T +32 11 52 10 44, [www.molenheide.be](http://www.molenheide.be)



### HEIDESTRAND RECREATION DOMAIN – ZONHOVEN

Heidestrand is one of the most beautiful camping sites in the vicinity, with a beautiful open air swimming pool with two super water slides and a diving tower comprising three floors. Apart from this, you will also find different lakes and, among others, a swimming river with beach for the little ones to play on. The adults can naturally also idle around at their leisure or enjoy one of the terraces. The immensely large terrain also offers nature lovers hiking and cycling opportunities. Those, that go without a care in the world, can rent a caravan with a lake-view for a midweek, weekend of week.

Heide Recreational Domain, T + 32 11 81 34 37, [www.heidestrand.be](http://www.heidestrand.be)



### HENGELHOEF RECREATION PARK – HOUTHALEN-HELCHTEREN

The Hengelhof Domain has everything for a lovely holiday or enjoyable day out! It is situated on the large 100-hectare Park Midden-Limburg so that you can walk and cycle undisturbed. Angling is possible in one of the many fishing lakes. Experience pleasure in the sub-tropical swimming pool with a wild waterway, leisure pool and water feature, or in the indoor play paradise with its sandy beach and pirate play ship.

Hengelhof Recreation Park, T + 32 89 38 25 00, [www.recreatieparkhengelhoef.be](http://www.recreatieparkhengelhoef.be)

### FLEMISH MINE MUSEUM – BERINGEN

At the Flemish Mine Museum, you will experience the story of hard labour of the mine worker and mine reclamation. A replica column gives a good image of the underground work and a model with sound and light play evokes the workings of the surface mine.

Flemish Mine Museum, T + 32 11 42 15 52, [www.toerismeberingen.be](http://www.toerismeberingen.be)



#### i INFORMATION

Cenzo: Wellness and Beauty lounge  
 Heuvenstraat 10  
 BE-3520 Zonhoven  
 T +32 11 81 15 45  
 info@cenzo.eu  
 www.cenzo.be



#### i INFORMATION

Greta Baeten Beauty - Relaxationcenter  
 Houthalensweg 68  
 BE-3520 Zonhoven  
 T+F +32 11 81 49 64  
 greta.baeten@skynet.be  
 www.gretabaeten.be

## Wellness in Zonhoven

### AN OASIS OF REST

In the rural, natural Zonhoven you can escape the pressures of the city and enjoy the rest and pure moments of pampering in one of the unique wellness centres. Relax in a beautiful environment in a sauna, steam bath or hammam and allow yourself to be pampered with a personalised beauty treatment. You can also visit Zonhoven for different special occasions such as breakfast, champagne, or ladies meetings at Cenzo or an Indian, cocoon or duo-zen event at Greta Baeten. The cosy atmosphere is at no additional cost. Allow yourself to be truly spoiled in Zonhoven and depart well rested and energised.

## Cenzo Wellness and Beauty lounge

All your senses will come to rest here. The time is wholly and exclusively devoted to you with a personalised treatment. After one visit you will feel deeply relaxed, visibly rejuvenated and recharged. You depart full of energy. Cenzo has a roofed and heated outdoor swimming pool with jet stream and colour therapy, Jacuzzi and hammam with eucalyptus herbs. At Cenzo you can also enjoy various treats such as breakfast, champagne, beauty and ladies gatherings.

## Greta Baeten Beauty Relaxation Center

Greta Baeten Beauty Relaxation Center organises the balance between outer and inner beauty for you. If you want to find your inner self, allow yourself to be seduced by a spectrum of caring and wellness treatments, awake your deepest senses and enjoy complete relaxation. In the enclosure of the 'Spa' you feel the cleansing powers of the baths. In the Finnish sauna or the Turkish steam bath, stress just melts away. Slip into the immersion tub and exchange this pressured world for the swimming pool and the Jacuzzi.

At Greta Baeten you can also enjoy the following: Indian day, cocooning, and duo zen,...

## Hotels in Hasselt and Zonhoven

### HOTEL BEST WESTERN HASSOTEL \*\*\*

Sint-Jozefsstraat 2, BE-3500 Hasselt  
T +32 11 23 06 55 - F +32 11 22 94 77  
info@hassotel.be - www.hassotel.be

Rooms 38  
Rates single room from € 85  
double room from € 110

### HOTEL DE GROENE HENDRICKX \*\*\*

Zuivelmarkt 25, BE-3500 Hasselt  
T +32 11 28 82 10 - F +32 11 28 82 11  
groene@lodge-hotels.be - www.lodge-hotels.be

Rooms 22  
Rates standard rate from € 85

### HOTEL EXPRESS BY HOLIDAY INN HASSELT \*\*\*

Thonissenlaan 37, BE-3500 Hasselt  
T +32 11 37 93 00 - F +32 11 37 93 01  
hotel@express-hihasselt.com - www.hiexpress.com/exhasselt

Rooms 89  
Rates single room from € 75  
double room from € 75

### HOTEL GOUDBLOEM \*\*\*

Nachtegalenstraat 49, BE-3520 Zonhoven  
T + 32 11 81 35 50 - F + 32 11 81 87 10

Rooms 6  
Rates single room from € 85  
double room from € 120

### HOTEL HOLIDAY INN HASSELT \*\*\*\*

Kattegatstraat 1, BE-3500 Hasselt  
T +32 11 24 22 00 - F +32 11 22 39 35  
hotel@holiday-inn-hasselt.com - www.holiday-inn.com/hasseltbel

Rooms 107  
Rates single room from € 85  
double room from € 85

### HOTEL IBIS HASSELT CENTRUM \*\*

Thonissenlaan 52, BE-3500 Hasselt  
T +32 11 23 11 11 - F +32 11 24 33 23  
HI456@accor.com - www.ibishotel.com

Rooms 59  
Rates single room from € 69  
double room from € 69  
surcharge breakfast € 13 per person



## Hotels in Hasselt and Zonhoven

### HOTEL LAAMHOF \*\*

Laambeekbroekweg 20, BE-3520 Zonhoven  
T +32 11 81 56 00 - F +32 11 81 56 20  
laamhof@scarlet.be - www.ponet.be/laamhof

Rooms 6  
Rates single room from € 55  
double room from € 76

### HOTEL PARKHOTEL \*\*\*

Genkersteenweg 350, BE-3500 Hasselt  
T +32 11 21 16 52 - F +32 11 22 18 14  
info@parkhotel-hasselt.be - www.parkhotel-hasselt.be

Rooms 29  
Rates single room from € 59  
double room from € 79

### HOTEL PAX \*

Grote Markt 16, BE-3500 Hasselt  
T +32 11 22 38 75 - T +32 477 33 63 89 - F +32 11 23 43 91  
stas.stefanie@belgacom.net

Rooms 9  
Rates single room from € 37,50  
double room from € 62  
three person room from € 87,50

### HOTEL RADISSON BLU \*\*\*\*

Torenplein 8, BE-3500 Hasselt  
T +32 11 77 00 00 - F +32 11 77 00 99  
reservations.hasselt@radissonblu.com - www.radissonblu.com/hotel-hasselt

Rooms 126  
Rates single room from € 110  
double room from € 110  
New opening highest meeting- and event hall and the Hasselt Sky lounge!



### HOTEL THE CENTURY \*\*

Leopoldplein 1, BE-3500 Hasselt  
T +32 11 22 47 99 - F +32 11 23 18 24  
hotel@thecentury.be - www.thecentury.be

Rooms	14	Apartments	4
Rates	single room € 60 double room/single use € 70 double room € 90	Rates	1 or 2 persons: € 100 3 persons: € 120 4 persons: € 140

### HOTEL TOP CLASS \*\*\*

Diestersteenweg 355, BE-3510 Hasselt-Kermt  
T +32 11 25 00 47 - F +32 11 87 10 86  
info@topclasshotel.be - www.topclasshotel.be

Rooms 15  
Rates single room from € 70  
double room from € 90



## Guest rooms (B&B) in Hasselt and Zonhoven

### ABELJANO

Smetstraat 36, BE-3501 Hasselt-Wimmeringen  
T +32 495 53 24 27 - F +32 11 65 60 28  
agnes@bedandbreakfasthasselt.com - www.bedandbreakfasthasselt.com

Rural environment, number of rooms/number of persons (4/8), cot, rooms with washbasin and shower and toilet, own secure parking, cycle shed, garden/terrace, pond, TV, Internet, non-smoking rooms available

### RATES

single room from € 70  
double room from € 90  
surcharge one night: € 10 per person

### BARBARA'S B&B

Tulpinstraat 33, BE-3500 Hasselt-Kiewit  
T +32 475 32 54 29 - F +32 11 74 47 40  
info@barbarabnb.be - www.barbarasbnb.be

rural environment, number of rooms/number of persons (3/9), cot, rooms with washbasin and bath or shower and toilet, own parking, garden/terrace, non-smoking rooms available, bicycles available for free, locked cycle shed

single room from € 45  
double room from € 50  
family room from € 60  
surcharge one night: € 5 per person

### BASOTTI

Paalsteenstraat 106, BE-3500 Hasselt  
T +32 477 24 37 06 - inga@pandora.be

rural environment, number of rooms/number of persons (1/2), room with washbasin, communal bathroom, non-smoking room, TV, Internet, sitting nook, mini bar

single room € 40  
double room € 50

### AT LIEVE AND JOS

Heidestraat 51, BE-3500 Hasselt  
T +32 11 22 10 85 - T +32 496 73 67 42 - F +32 11 22 41 32  
info@bijlieveenjos.be - www.bijlieveenjos.be

rural environment, number of rooms/number of persons (4/10), cot, rooms with washbasin, and bath or shower and toilet, TV, own parking, garden/terrace, non-smoking rooms available, locked cycle shed, take-away lunch available, open air swimming pool heated from May to October

single room from € 45  
family room from € 70  
surcharge one night: € 5 per person

### BLOONWINNING

Oosterbeekstraat 60, BE-3500 Hasselt-Sint-Lambrechts-Herk  
T +32 496 99 38 11 - F +32 11 59 18 32  
info@bloonwinning.be - www.bloonwinning.be

rural area, courtyard farm, number of rooms/persons (6/12), rooms with washbasin and shower and washbasin, Internet, air conditioning, parking, restaurant, cycle rental

single room from € 75  
double room from € 110  
surcharge one night: € 10 per room

### CASA ROMAN

Herestraat 72, BE-3520 Zonhoven  
T +32 496 86 35 35 or T +32 496 86 37 37  
info@casaroman.be - www.casaroman.be

rural area, each room with a washbasin and bath or shower and toilet, number of rooms/number of persons (6/14), cycle rental, Vespa rental, locked cycle shed, petanque course, garden/terrace, own parking, TV, open air swimming pool, playground, wireless Internet, pets allowed, also groups of 10 to 14 persons

single room € 58  
double room € 84 (weekdays)  
double room € 96 (weekend)

### CHAMBRES b'HÔTES, ON BOARD OF THE SHIP 'LE FABULEUX DESTIN'

Kempische Kaai 68, BE-3500 Hasselt  
T +32 476 23 29 41  
info@chambresbhotels.be - www.chambresbhotels.be

city centre, number of rooms/number of persons (4/8), rooms with washbasin and bath or shower, and toilet, TV, Internet, air conditioning, swimming pool, smoke free

single room from € 155  
double room from € 185

## Guest rooms (B&B) in Hasselt and Zonhoven



### CHAMBRES D'HÔTES ÉCOLE DE VIE

Sint-Amandusstraat 32, BE-3511 Hasselt-Stokrooie

T +32 11 72 71 73

info@ecoledevie.be - www.ecoledevie.be

rural area, number of rooms/persons (3/6), restaurant, rooms with washbasin and bath or shower and toilet, bicycle rental, locked cycle shed, canoe rental, garden/terrace, own parking, take-away lunch available, TV, Internet, non-smoking rooms available

### RATES

double room from € 95

suite from € 115



### DE WELLNESSHOEVE

Kattendansstraat 41, BE-3500 Hasselt-Sint-Lambrechts-Herk

T +32 471 65 83 92

info@dewellnesshoeve.be - www.dewellnesshoeve.be

rural environment, number of rooms/number of persons (1/3), room with washbasin and bathroom with shower and Jacuzzi bath and toilet, garden/terrace, TV, Internet, cycle shed, parking, non-smoking room, wellness institute on a renovated farm

single room from € 50

double room from € 100

surcharge one night: € 5 per person



### DE WIMMER

Luikersteenweg 516, BE-3501 Hasselt-Wimmertingen

T +32 11 21 55 38 - T +32 473 50 82 77

de.wimmer@hotmail.com - www.de-wimmer.be

rural environment, number of rooms/number of persons (4/8), restaurant, rooms with washbasin and bath or shower and toilet/garden/terrace, TV, Internet, cot

per room € 115



### EDCHER

Beringersteenweg 42, BE-3520 Zonhoven

T +32 11 72 38 49 - T +32 487 46 56 24

evert.de.boer@telenet.be - www.bbedcher.com

rural environment, number of rooms/number of persons (3/6), rooms with washbasin and bath or shower and toilet, cycle route network, hiking area, garden/terrace, own parking, TV

single room from € 50

double room from € 90



### EMILY'S PLACE

Kneuterweg 5, BE-3520 Zonhoven

T + 32 11 82 12 50 - F + 32 11 81 77 14

emilysplace@telenet.be, www.emilysplace.be

rural environment, number of rooms/number of persons (1/4), rooms with washbasin and bath or shower and toilet, cycle rental, locked cycle shed, take-away lunch available, garden/terrace, own parking, TV, open air swimming pool

single room from € 60

double room from € 70

surcharge 1 night: € 7



### GABB

Guffenslaan 31, BE-3500 Hasselt

T +32 11 22 14 26 - T +32 477 20 28 64

groekaerts@pandora.be - www.gabb.be

city centre, number of rooms/number of persons (2/4), cot, rooms with washbasin and bath or shower and toilet, locked cycle shed, garden/terrace, TV, own parking, Internet, non-smoking room available

single room from € 60

double room from € 85

surcharge parking: € 5



### DUSART GUEST HOUSE

Congostraat 9, BE-3500 Hasselt

T +32 475 32 54 29

info@guesthousedusart.be - www.guesthousedusart.be

city centre, number of rooms/number of persons (5/20), cot, rooms with washbasin and bath or shower and toilet, TV, Internet, non-smoking room available, kitchenette

single room from € 49

double to four person room from € 69

budget room: € 25 per person 8 persons)

surcharge breakfast: € 8 per person

# Guest rooms (B&B) in Hasselt and Zonhoven

## THE WOODEN HOUSE

Vilhoekstraat 1A, BE-3520 Zonhoven  
T +32 11 53 13 81, F +32 11 53 13 81  
info@hethoutenhuis.be - www.hethoutenhuis.be

rural environment, number of rooms/number of persons (1/4), cot, room with washbasin and bath or shower and toilet, locked cycle shed, garden/terrace

## RATES

single room: € 45  
double room: € 80  
children: from € 20  
surcharge 1 night € 5  
surcharge 1 person € 5

## THE COACH- HOUSE

Sint-Maartenplein 56, BE-3512 Hasselt-Stevoort  
T+F +32 11 74 44 78  
info@koetshuis.be - www.koetshuis.be

rural environment, number of rooms/number of persons (5/10), cot, rooms with washbasin and bath or shower and toilet, luggage delivery service, cycle rental, locked cycle shed, take-away lunch available, garden/terrace, own parking, TV, Internet, all rooms are non-smoking

single room from € 50  
double room from € 80  
surcharge one night: € 5 per person

## IN FORM ART & BREAKFAST

Oppenstraat 73, BE-3512 Hasselt-Stevoort  
T +32 473 56 02 72  
ineke.voorsteegh@in-vorm.info - www.living.in-vorm.info

rural environment, number of rooms/number of persons (1/2), bunk, room with washbasin and bath or shower and toilet, cycle shed, pasture, TV, WIFI Internet, free gallery visit

single room: € 40 - € 55  
double room: € 55 - € 70

## KOOKPUNTLOFT

Hemelrijk 13, BE-3500 Hasselt  
T +32 11 72 79 69 - info@kookpunt.be - www.kookpunt.be

city centre, number of rooms/number of persons (1/4), room with washbasin and bath or shower and toilet, cot, garden/terrace, TV, Internet, own parking, non-smoking room, air conditioning

single room up to  
four person room from € 120

## LANDHUIS ALBATROS

Albertkanaalstraat 53, BE-3511 Hasselt-Kuringen  
T+F +32 11 25 10 75 - T +32 474 69 13 71  
landhuis\_albatros@hotmail.com

rural environment, number of rooms/number of persons (2/5), communal bathroom, luggage delivery service, bicycles available for free, locked cycle shed, take-away lunch available, garden/terrace, own parking, tv, non-smoking rooms available

single room from € 30  
double room from € 60

## LE PETIT VÉLO

Runkstersteenweg 505, BE-3500 Hasselt  
T +32 11 72 69 65 - T +32 479 83 69 01  
info@lepetitvelo.be - www.lepetitvelo.be

rural environment, number of rooms/number of persons (2/6), locked cycle shed, garden/terrace, own parking, tv, internet, non-smoking rooms available

single room from € 100  
four person room from € 180  
surcharge one night:  
€ 5 per person

## LE REFUGE

Kiewitstraat 247, BE-3500 Hasselt-Kiewit  
T +32 11 33 26 64 - F +32 11 28 52 38  
info@lerefugekiewit.be - www.lerefugekiewit.be

rural environment, number of rooms/number of persons (4/9), rooms with washbasin and bath or shower and toilet, cot, bush park, own parking, TV, Internet, luggage service. take-away lunch available

single room from € 65  
double room from € 95

# Guest rooms (B&B) in Hasselt and Zonhoven



## LOMBAARDHOF

Lombardstraat 42, BE-3500 Hasselt  
 T +32 11 22 96 79  
 info@lombardhof.com - www.lombardhof.com  
 city centre, number of rooms/number of persons (1/1), non-smoking room

## RATES

single room from € 60



## MARIS LOGIES

Van Groesbeekstraat 6, BE-3511 Hasselt-Kuringen  
 T +32 11 25 03 18 - T +32 477 26 67 40 - F +32 11 24 23 65  
 maris.logies@pandora.be - www.users.pandora.be/maris.logies  
 rural area, number of rooms/persons (3/6), cot, rooms with washbasin  
 and bath or shower and toilet, locked cycle shed, garden/terrace, TV, Internet

single room from € 40  
 double room from € 70  
 surcharge one night: € 5 per person  
 discount for children



## PAALSTEEN

Paalsteenstraat 108, BE-3500 Hasselt  
 T +32 11 22 52 32, T +32 473 28 21 47, mija@sodermans.com  
 rural environment, number of rooms/number of persons (1/2), room with washbasin,  
 and bath/shower and toilet, garden/terrace, own parking, TV, Internet, non-smoking rooms available.

single room from € 50  
 double room from € 60



## 'T HEMELHUYTS

Hemelrijk 15, BE-3500 Hasselt  
 T +32 11 35 13 75 - F +32 11 35 13 76  
 info@hemelhuyts.be - www.hemelhuyts.be  
 city centre, number of rooms/number of persons (5/12), cot,  
 rooms with washbasin and bath or shower and toilet, bicycle rental, locked  
 cycle shed, garden/terrace, TV, Internet, air conditioning, non-smoking rooms available

single room from € 75 to € 90  
 double room from € 85 tot € 100  
 family room from € 120 to € 140



## 'T STADHUIS (CITY HALL)

Lombardstraat 4, BE-3500 Hasselt  
 T +32 495 18 09 33  
 mvangoethemd@live.be  
 city centre, number of rooms/number of persons (4/10), rooms with washbasin  
 and bath or shower and toilet, TV, Internet, non-smoking rooms

one to three person room  
 between € 60 and € 120  
 surcharge one night: € 5 per person



## VILLA DES ROSES

Luikersteenweg 66, BE-3500 Hasselt  
 T +32 476 48 46 93  
 www.villadesroseshasselt.be  
 city centre, number of rooms/number of persons (2/4), cot, rooms with washbasin and bath or shower,  
 and toilet, terrace, locked cycle shed, own parking, TV, Internet, rooms for non-smokers

double room € 110  
 suite € 130  
 € 10 discount per extra night



## VOUS LÉ VOUS

Wimmertingenstraat 76, BE-3501 Hasselt-Wimmertingen  
 T +32 11 74 81 85 - F +32 11 74 81 95  
 info@vouslevous.be - www.vouslevous.be  
 rural environment, number of rooms/number of persons (5/10), cot, rooms  
 with washbasin and bath or shower and toilet, bicycle rental, restaurant, Internet, garden/terrace,  
 own parking, tv, air conditioning, non-smoking rooms available

single room from € 75  
 double room from € 85

# Holiday homes in Hasselt and Zonhoven

## DE WOUDAAP

Wijvestraat 85, BE-3520 Zonhoven  
T + 32 11 82 53 26 or T + 32 495 63 87 74  
woudaap@skynet.be - www.woudaap.be

holiday home for up to six persons, rural area, number of rooms/number of persons (1/6), cot, room with washbasin and bath or shower and toilet, locked cycle shed, garden/terrace, pond, kitchenette, laundrette, TV, Internet

## RATES

weekend € 210 - € 250  
midweek € 230 - € 290  
week € 360 - € 450

## SAGE

Bremstraat 24, BE-3511 Hasselt-Kuringen  
T +32 496 26 97 00  
jeroen@aldoy.be

rural area, holiday home for up to 10 persons

€ 100 per day with a minimum of three days  
cleaning when leaving included

## SPAANS HUIS (SPANISH HOUSE)

Kiezelstraat 70/2, BE-3500 Hasselt-Godsheide  
T +32 476 97 33 65  
carolacoenjaerts@skynet.be - www.spaanshuis.be

holiday home with 3 rooms for four to six persons, rural area, garden/terrace, tv, Internet, fitted kitchen

from € 80 to € 110 per night  
weekend € 230

## STADSHUISJE 36

Gaarveldstraat 36, BE-3500 Hasselt-Runkst  
T +32 11 27 55 44 - T +32 494 45 31 47  
info@stadshuisje36.be - www.stadshuisje36.be

holiday home for up to 6 persons, urban environment, crib, room with washbasin and bath or shower and toilet, locked cycle shed, garden/terrace, TV, kitchenette, Internet, non-smoking rooms available

weekend € 290  
midweek € 450  
week € 615  
discount € 15 per night in low season and weekday

## STOCKMANS

Beverzakbroekweg 99, BE-3520 Zonhoven  
T + 32 11 21 05 48  
www.stockmansvision.com/vakantiewoning

rural environment, holiday home for up to 4 persons, room with washbasin and bath/shower (and toilet)  
locked cycle shed, garden/terrace, television, pets allowed

weekend € 120  
week € 280  
midweek € 160

## TEN EIKENEN

Eikenenweg 53, BE-3520 Zonhoven  
T + 32 11 22 56 69 - T + 32 475 49 50 83  
info@eikenen.be, www.eikenen.be

rural environment, holiday home for up to 4 persons, cot, room with washbasin and bath/shower (and WC), locked cycle shed, garden/terrace, kitchenette, television, Internet connection, air conditioning, non-smoking room available

midweek € 220  
weekend € 220  
week € 330  
(discount in low season)

## Budget accommodation in Hasselt

### THE ZUMMERHEEM

Schuurstraat 5, BE-3511 Hasselt-Stokrooie  
T +32 11 22 89 97 - T +32 475 76 16 28 - F +32 11 22 89 79  
info@zummerheem.be - www.zummerheem.be

rural environment, number of rooms/number of persons (8/27), cot, rooms with washbasin and bath or shower and toilet, communal bathroom, luggage delivery service, cycle rental, locked cycle shed, take-away lunch available, garden/terrace, own parking, TV, non-smoking rooms available

### RATES

single room € 35  
double room € 60  
surcharge one night € 5 per person

### STUDHO

Armand Hertzstraat 2, BE-3500 Hasselt  
T +32 11 25 65 88 - T +32 472 38 90 73 - F +32 11 25 66 06  
info@studho.be - www.studho.be

student rooms with hotel facilities, city centre, room with washbasin, communal bathroom, locked cycle shed, cafeteria/snack bar, own parking, TV, Internet, sport facilities

single room € 25  
single room with breakfast € 28  
single room in half pension € 33,25

## Camping sites in Hasselt and Zonhoven

### HEIDESTRAND

Zwanenstraat 105, BE-3520 Zonhoven  
T +32 11 81 34 37 - F +32 11 81 70 41  
info@heidestrand.be - www.heidestrand.be

100 tourist sites, 620 fixed sites, rural environment, caravan rental, bicycle rental, cafeteria/snack bar, garden/terrace, pond, laundrette, Internet, shop, pets allowed, open air swimming pool, playground, sport facilities

Rate per site from € 19

### HOLSTEENBRON

Hengelhoefseweg 9, BE-3520 Zonhoven  
T +32 11 81 71 40 - F +32 11 44 17 89 - camping.holsteenbron@skynet.be - www.holsteenbron.be

91 sites, rural environment, cafeteria/snack bar, pond, laundrette, pets allowed, playground sport facilities, rental caravans

Rate per site € 20 (high season)  
€ 17 (low season)  
rental caravan from € 43/night

### KAMPTERREIN BETHANIË

Only in July and August for youth camps or weekend in tents.  
Area for tents: 40-are.

Camping address: Brugbendenstraat 1, BE-3500 Hasselt-Godsheide.  
All practical information and rates on [www.kampterrein.be](http://www.kampterrein.be)  
Reservation: OGL, T +32 89 32 95 55 or T +32 475 24 20 11  
or mail [info@ogl.be](mailto:info@ogl.be)

Viewing by appointment only.





# ARRANGEMENTS

## CONTENT

### 1. ARRANGEMENTS FOR INDIVIDUALS

Hasselt Smaakmaker (Taster trip)	48
----------------------------------	----

### 2. ARRANGEMENTS FOR GROUPS

Day trip: Hasselt Royal	48
Day trip: From the 'Heilig Paterke' to the 'Hasselts Witteke'	49
Day trip: From Hasselt to Alden Biesen along the Noblemen's route	49
Day trip: Hasselt Jenever City	50
Sweetie route	50
Pleasant Limburg	50
Day trip: The Hasselt eat and walk arrangement	51

### 3. COMPANY VISITS FOR GROUPS

Sounion Arte Art Gallery	52
Wissels Grain Distillery	52
Massy Distillery	52
Wine Castle Genoels-Elderen	53
Fair Trade	53

### 4. RESTAURANTS FOR GROUPS AND INDIVIDUALS

Restaurants	54
Hasselt	54

### 5. BUS TRIPS FOR GROUPS

Hazelaar Route Excursion	55
Noblemen's Route Excursion	55
Free bus parking in Hasselt	55

### 6. EVENT CALENDAR

56-57-58

### 7. INFORMATION AND TERMS AND CONDITIONS

59

## INDIVIDUAL ARRANGEMENTS



## i INFORMATION AND RESERVATION

Hasselt Tourism  
T +32 11 23 95 40  
toerisme@hasselt.be

## GROUP ARRANGEMENTS



## i INFORMATION AND RESERVATION

Hasselt Tourism  
T +32 11 23 95 42  
groepsbezoeken@hasselt.be

## 1. ARRANGEMENTS FOR INDIVIDUALS

## Hasselt Taster Trip

Besides the hospitality and cosiness, Hasselt also has all sorts of enjoyable things on offer for the connoisseur. Taste is therefore also the theme of an enjoyable day in Hasselt.

Feel like a connoisseur's day? Get your taste package from Hasselt Tourism and enjoy. Besides a city plan, you will also receive a voucher booklet entitling you to:

- a tasting at Temmerman
- entrance to and a drink at the National Jenever Museum
- an enjoyable pamper coffee at Chocolaterie Boon
- coffee with cake at the Cools bakery
- a three-course meal in restaurant Taratata.

Available: throughout the year from Tuesday to Saturday, except public holidays. Not in July and August.

## € RATE

- € 65 per person

## 2. ARRANGEMENTS FOR GROUPS

## Hasselt Royal

Hasselt Royal means enjoying a royal day out with everything in and around the capital city of Limburg.

## ! PROGRAM

- 09:30 Arrival in Hasselt. Reception with coffee and Hasselt's brown spiced biscuits.  
The guide will meet you and will escort you for the rest of the day
- 10:00 Guided tour to the city museum Het Stadsmus. Discover the residents of Hasselt and their past in this exceptional museum
- 11:15 Enjoy a Limburg local beer at the 'Tuincafé' of the museum
- 12:00 Time for a three-course meal, one refreshment included
- 14:00 Depart on a guided tour with the city tram.  
After the city visit, the city tram takes you to the Japanese Garden
- 15:00 Guided tour to the beautiful Japanese Garden
- 16:15 The city tram returns you to the city centre.  
The coffee and cake are ready in the Borrelhuis
- 17:00 End of the program.

Available: daily from 1 April to the end of October, except on Sundays and public holidays and in the months of July and August.

## € RATE

- Rate per person € 51 (from 25 to a maximum of 47 participants)
- Fee for guide included.
- Payment due on receipt of the invoice.



### i INFORMATION AND RESERVATION

Hasselt Tourism  
T +32 11 23 95 42  
groepsbezoeken@hasselt.be



### i INFORMATION AND RESERVATION

Hasselt Tourism  
T +32 11 23 95 42  
groepsbezoeken@hasselt.be

### ? DID YOU KNOW?

Only possible with own vehicle.

## From the 'Heilig Paterke' to the 'Hasselts Witteke'

### i PROGRAM

- 10:00 Arrival in Hasselt.  
Reception with coffee and Hasselt's brown spiced biscuits.  
The guide will meet up with you for a city walk
- 10:30 Historical walk in the city centre conducted by a guide with a short visit to the Paterkeskerk, the tomb and the museum of the Heilig Paterke (Sainted Father)
- 12:30 Time for a three-course meal, one refreshment included
- 14:30 Guided tour to the National Jenever Museum. in the tasting room you can enjoy a 'witteke' (a little white one - chilled jenever) or a soft drink
- 16:00 End of the program.

Available: daily (except Mondays), during the opening hours of the museums

### € RATE

- Rate per person (from 25 participants): € 30 - guide fee included.
- Payment due on receipt of the invoice.

## From Hasselt to Alden Biesen along the Noblemen's route

You undertake a varied day trip through the breathtaking green landscape, sprinkled with castles and castle estates. During the day you will visit one of the museums in Hasselt and you go on a tour of the Country Commandery Alden Biesen in the Bilzen municipality.

### i PROGRAM

- 10:00 Arrival in Hasselt.  
Reception with coffee and Hasselt's brown spiced biscuits.
- 10:30 The guide picks you up and accompanies you to the museum
- 10:45 Guided tour of one of Hasselt's municipal museums or the Japanese Garden. Choose from
- the City museum 'Het Stadsmus' or
  - the Fashion museum or
  - the National Jenever Museum or
  - the Japanese Garden (from 1 April to end October)
- 12:30 Time for a three-course meal in the Cultural centre, one refreshment included
- 14:00 Guided tour with your own vehicle incorporating viewing of a few castles on the Noblemen's route (29 km) in the Haspengouw landscape.  
Tour of the Land Commandery Alden Biesen in Bilzen and visit to the French Garden at 15:30
- 17:00 Coffee and 'Limburgse vlaai' (Limburg flan) in the café
- 17:30 Depart for Hasselt (19 km)
- 18:00 Arrival in Hasselt and end of the program.

Available: daily (except Mondays), during the opening hours of the museum

### € RATE

- Rate per person (from 25 participants): € 41 - guide fee included.
- Payment due on receipt of the invoice.



### i INFORMATION AND RESERVATION

Hasselt Tourism  
T +32 11 23 95 42  
groepsbezoeken@hasselt.be



### i INFORMATION AND RESERVATION

Hasselt Tourism  
T +32 11 23 95 42  
groepsbezoeken@hasselt.be



### i INFORMATION

Limburg Specialities and Delicatessen  
Kuringersteenweg 161  
BE-3500 Hasselt  
T +32 11 87 13 54  
F +32 11 87 15 75  
info@lekkerlimburgs.be  
www.lekkerlimburgs.be

## Hasselt Jenever City

### PROGRAM

- 10:00 Arrival in Hasselt, reception with coffee and Hasselt brown spiced biscuits  
10:30 A tourist walk, conducted by a guide, in which the emphasis lies on the intriguing jenever history of the city. Along the way we offer you a 'witteke' (whitey) from Hasselt.  
12:30 Lunch. Choose from a jenever menu, day menu or stew  
14:30 Guided tour to the National Jenever Museum including free drink  
16:00 End.

Available: daily (except Mondays), during the opening hours of the museum

### € RATE

- € 18 per person (from 25 participants) guide fee included (without lunch).
- Payment due on receipt of the invoice.

## Sweetie route

A guide accompanies you to the beautiful little places in Hasselt. Along the way you receive ample opportunity for tasting various Hasselt specialties, ranging from jenever berries to a spiced biscuit, a chocolate praline, a cake or a buttered roll. The trip starts at the offices of Hasselt Tourism and ends with an enjoyable cup of coffee and a piece of cake in the city museum Het Stadsmus.

Available: throughout the year from Tuesday up to and including Saturday, except public holidays.  
Not in July and August.  
Duration 2 hours.

### € RATE

- € 8 per person
- fee for guide € 60 - maximum of 20 persons per guide.

## Pleasant Limburg

The Limburg flan or Hasselt brown spice biscuits are not the only local products which Limburg has in abundance, discover the delicatessen's where you literally find hundreds of local products. You will undertake a surprising culinary trip on the way and can buy various products for immediate consumption or packed neatly as a totally unique festive gift.

### i OPENING HOURS

Tuesday to Saturday from 9:30 to 12:00 and from 13:00 to 18:30



### i INFORMATION AND RESERVATION

Hasselt Tourism  
T +32 11 23 95 42  
groepsbezoeken@hasselt.be

## The Hasselt 'Bite and Walk' arrangement

### A CULINARY WALK ALONG THE COSIEST PLACES IN HASSELT

Ever attended a meal where you land up at a different table for each course? Hap-Stap ('Eat-Walk') is a culinary walk that takes place along some of the cosy restaurants in Hasselt. While you stretch your legs between courses, the guide shows you the cosiest places in the city.

### i PROGRAM

- 10:00 Reception with coffee and delicious Hasselt brown spiced biscuits.
- 10:30 Start of the guided city tour (part 1)
- 11:30 Tasty starter, including a glass of wine
- 12:00 Continuation city tour (part 2)
- 13:00 The main course is served with a glass of wine in the next restaurant
- 14:00 Guided tour to the National Jenever Museum. A 'witteke' (a little white one - chilled jenever) is served in the tasting room
- 15:30 Continuation city tour (part 3)
- 16:00 End with a dessert and a cup of coffee
- 16:30 End of the program.

Available: daily except Mondays, Sundays and public holidays.

### € RATE

- Rate per person € 63, for groups of 10 to 20 persons.  
Fee for guide included.
- Payment due on receipt of the invoice.



## 'Eat and Walk' evenings

### i PROGRAM

- 18:30 Start of the guided city tour (part 1)
- 19:00 Appetizer in the Refuge: glass of cava with a bite or a glass of champagne with a bite
- 19:30 Proceed with the city tour (part 2)
- 20:00 Main course in restaurant De Goei Goesting: Irish beef fillet with fresh bearnaise sauce and hand cut French fries and a glass of wine
- 21:00 Proceed with the city tour (part 3)
- 21:30 Dessert in the restaurant Hassotel: plate of sweets and a cup of coffee.

Available: daily except Mondays, Sundays and public holidays.  
for groups of 10 to 20 persons.

### € RATE

- Rate per person € 61 for the menu with a glass of cava or € 65 for the menu with a glass of champagne, guide remuneration included.
- Payment due on receipt of the invoice.



### i INFORMATION AND RESERVATION

Hasselt Tourism  
T +32 11 23 95 42  
groepsbezoeken@hasselt.be


**i** INFORMATION AND RESERVATION

Sounion Arte Art gallery  
 Kiezelstraat 88  
 BE-3500 Hasselt-Godsheide  
 T +32 484 43 36 30  
 info@sounionarte.be  
 www.sounionarte.be


**i** INFORMATION AND RESERVATION

Massy Distillery nv  
 Hofstraat 64  
 BE-3530 Houthalen-Helchteren  
 T +32 11 52 45 83  
 F +32 11 52 45 82  
 www.massy.be

**3. COMPANY VISITS FOR GROUPS**

## Sounion Arte Art gallery

Sonny Melerowitz brings to her art gallery - apart from the exclusive art and image gallery - also 'kunst op maat' ('art made to measure') and 'kunst te huur' ('art to rent'). Art is so much in her blood that she makes a personal and fitting artwork for the specific colours of each interior. A visit to the special art gallery with your group or association is really worthwhile. The entrance is free. You can also partake in a champagne brunch.

Available: Open every Sunday from 14:00 to 18:00. Other days only by appointment.

## Wissels Grain Distillery

In this cute city distillery you discover the secret of Hasselt: the process of distilling of the genuine Hasselt city jenever!

**i** INFORMATION

information and reservations: direct from the enterprise.  
 Only via e-mail or telephonic appointment.  
 Group visits of 15 persons or more are welcome throughout the year,  
 7 out of 7, from 8:00 in the mornings until 21:00 in the evenings.  
 Individual visits only possible during the weekend of the jenever festivals.

Wissels Grain Distillery  
 Normandiëstraat 12-14  
 BE-3500 Hasselt  
 T +32 11 26 26 00  
 T +32 476 599 525  
 F +32 11 26 26 62  
 info@stokerij.com  
 www.stokerij.com

## Massy Distillery nv

Interested to know how jenever is distilled according to traditional methods?  
 Then visit this authentic jenever distillery.

**i** INFORMATION

Groups to a maximum of 20 persons.


**i** INFORMATION AND RESERVATION

Wijnkasteel Genoels-Elderen  
 (Wine Castle Genoels-Elderen)  
 Kasteelstraat 9  
 BE-3770 Riemst  
 T +32 12 39 13 49  
 info@wijnkasteel.com  
 www.wijnkasteel.com

## Wine castle Genoels-Elderen - Riemst

Visit the only wine castle in Belgium. The Genoels-Elderen wine castle is situated next to the old Roman military highway between Tongeren and Maastricht. The climate there is almost ideal for the cultivation of the best wine grapes. Even the Romans made wine here. With more than 20 hectares of vineyards the Genoels-Elderen castle is the largest wine domain in the country. Expert guides take you through the park, the vineyards, the rose garden, the distillery, the press house and 13th-century wine cellars.

## Hasselt, a Fair Trade city

As a Fair Trade District, since 2006, Hasselt strives for fair prices for products of the local farmers here and in the south. Besides that, the city stimulates the system of short circuits to develop a relationship between the farmer and the buyer in order to familiarise him with the production process of the farmer's products. Apart from this, transport is drastically decreased, which is good for the environment.

You can collect a free farmer cycle route plan from Hasselt Tourism; the Hasselt farmers explain their products and their ways of living and working in these documents. In order to give everyone in Hasselt the chance to discover fair trade products and also to help the farmers of the south to move forward in life via the Fair Trade, they developed a Fair Trade City plan with all the addresses of shops where you can buy southern products as well as those from the Hasselt farmers at an fair price. This way you contribute to a better world in a pleasant and fair manner. You will recognise the sites where you can buy fair trade and farm products in Hasselt from the logo 'Hasselt, (h)eerlijke stad' ('Hasselt pleasant and honest city'): Further in this guide you can recognise the catering outlets that offer fair trade products from the logo.

**i** INFORMATION

[www.hasseltisverkocht.be](http://www.hasseltisverkocht.be) or [www.fairtradegemeenten.be](http://www.fairtradegemeenten.be)



## RESTAURANTS



## i INFORMATION

You can ask for the free brochure 'Culinary Hasselt' containing a variety of pleasant eatery addresses from Hasselt Tourism.



## 4. RESTAURANTS

## Restaurants in Hasselt



As the Capital City of Taste, Hasselt owes it to itself to ensure people are treated in a hospitable and burgundian manner. Then you will also find many excellent restaurants and cosy eateries of varying plumage.

[www.lekkerinhasselt.be](http://www.lekkerinhasselt.be)

## Restaurants for groups in Hasselt 2010

### THE BORRELHUIS

Witte Nonnenstraat 28 - T +32 11 24 32 28 - [www.borrelhuis.be](http://www.borrelhuis.be)

### THE CENTURY

Leopoldplein 1 - T +32 11 22 47 99 - [www.thecentury.be](http://www.thecentury.be)

### DAI CUGINI

Zuivelmarkt (Dairy market) 20 - T +32 11 22 24 54 - [www.dai-cugini.be](http://www.dai-cugini.be)

### FLORIAN

Fruitmarkt (Fruit market) 22 - T +32 11 22 15 25 - [www.florianhasselt.be](http://www.florianhasselt.be)

### THE GOEI GOESTING

Zuivelmarkt (Dairy Market) 18 - T +32 11 32 52 82 - [www.degoeigoesting.be](http://www.degoeigoesting.be)

### HASSOTEL – RESTAURANT DEN BOULVAER

Sint-Jozefsstraat 2 - T +32 11 23 06 55 - [www.hassotel.be](http://www.hassotel.be)

### HOLIDAY INN – RESTAURANT CATTUM

Kattegatstraat 1 - T +32 11 24 22 00 - [www.holiday-inn-hasselt.be](http://www.holiday-inn-hasselt.be)

### 'T KLEINE GENOEGEN

Raamstraat 3 - T +32 11 22 57 03 - [www.kleinegenoegen.be](http://www.kleinegenoegen.be)

### KOOKPUNT

Hemelrijk 13 - T +32 11 72 79 69 - [www.kookpunt.be](http://www.kookpunt.be)

### DE MARKT/ DRUGSTORE

Grote Markt 8-10 - T +32 11 22 80 08

### THE ORANGERIE

Walputstraat 9 - T +32 11 30 31 06 - [www.orangerie-hasselt.be](http://www.orangerie-hasselt.be)

### PLAZZA

Grote Markt 14 - T +32 11 20 10 31

### RADISSON BLU HOTEL – RESTAURANT KOPER

Torenplein 8 - T +32 11 77 00 00 - [www.radissonblu.com](http://www.radissonblu.com)



### CULTURAL CENTRE, THE THEATER CAFE

Kunstlaan 5 - T +32 11 85 90 75 - [www.theatercafe.be](http://www.theatercafe.be)



### DE VOLKSMACHT

Mgr. Broekxplein 6 - T +32 11 22 44 56

## BUS TRIPS FOR GROUPS



## i INFORMATION AND RESERVATION

Hasselt Tourism  
T +32 11 23 95 42  
groepsbezoeken@hasselt.be

## i INFORMATION AND RESERVATION

Hasselt Tourism  
T +32 11 23 95 42  
groepsbezoeken@hasselt.be

## ! TIP

GPS Autocarparking  
Congostraat 9  
3500 Hasselt

## 5. BUS TRIPS FOR GROUPS

## Hazel Route Excursion

During the guided excursion of about 60 km with your own coach, we, together with the guide, look at the most important sights and natural areas of a few of the towns and villages in Hasselt. Along the way you visit the Abdijsite Herkenrode (Herkenrode Abbey site) or the Spalbeek Chapel.

Available: daily.  
Duration 3 hours.

## € RATE

- Fee for guide: € 90 - one guide per vehicle.

## Noblemen's Route Excursion

This guided tour of about 30 km, with your own vehicle, brings you to some of the most beautiful castles in the splendid Haspengouw landscape.

Available: daily.  
Duration 2 hours.

## € RATE

- Remuneration guide € 60 - one guide per vehicle.

## Free bus parking in Hasselt

The free bus parking is situated on the Kolonel Dusartplein, behind the barracks wall (look at the fold-out page at the back of this brochure for an extended city plan). The eleven parking areas are available for free throughout the year, day and night, except during the period of the Hasselt fair and during big events. More information is available from Hasselt Tourism, T + 32 11 23 95 40 or [toerisme@hasselt.be](mailto:toerisme@hasselt.be)

## 6. EVENT CALENDAR

# Hasselt and Zonhoven

## Selection from the 2010 year program

### JANUARY

Trade Sunday	3 January	Hasselt Centre		<a href="http://www.hasseltdewinkelstad.com">www.hasseltdewinkelstad.com</a>
Wedding fair	9 and 10 January	Grenslanndhallen	011 29 94 99	<a href="http://www.grenslanndhallen.be">www.grenslanndhallen.be</a>
Building innovation	29 January to 7 February	Grenslanndhallen	011 29 94 99	<a href="http://www.grenslanndhallen.be">www.grenslanndhallen.be</a>

### FEBRUARY

Super prestige Field trips	7 February	Molenheide Area	011 81 05 03	<a href="http://www.superprestigezonhoven.be">www.superprestigezonhoven.be</a>
Carnival ceremony	14 February	Zonhoven Centre	0474 54 05 39	<a href="http://www.zonneridders.be">www.zonneridders.be</a>
Mixs and Meggy	13-14 February	Grenslanndhallen	011 29 94 99	<a href="http://www.grenslanndhallen.be">www.grenslanndhallen.be</a>
Antiques fair	26 February to 7 March	Grenslanndhallen	011 29 94 99	<a href="http://www.grenslanndhallen.be">www.grenslanndhallen.be</a>
Regi in the Mix	27 February	Ethias Arena	011 29 94 99	<a href="http://www.ethiasarena.be">www.ethiasarena.be</a>

### MARCH

Carnival in Hasselt	14 March	Hasselt Centre	011 23 96 47	(children's carnival on 12 March)
Zonhoven Annual market	14 March	Zonhoven Centre	011 81 04 37	<a href="http://www.zonhoven.be">www.zonhoven.be</a>
Garden fair	19 to 23 March	Grenslanndhallen	011 29 49 99	<a href="http://www.grenslanndhallen.be">www.grenslanndhallen.be</a>
Annual Horse market	20 March	Kuringen Centre	011 23 69 47	<a href="http://www.uitinhasselt.be">www.uitinhasselt.be</a>
Trade Sunday	28 March	Hasselt Centre		<a href="http://www.hasseltdewinkelstad.com">www.hasseltdewinkelstad.com</a>

### APRIL

Antiques- and Brocante market	Every Saturday early afternoon from 3 April to 30 October	Kolonel Dusartplein	0496 58 74 02	<a href="http://www.uitinhasselt.be">www.uitinhasselt.be</a>
Schlagerfestival 2010	3 and 4 April	Ethias Arena	011 29 94 99	<a href="http://www.ethiasarena.be">www.ethiasarena.be</a>
I love the 90's - The Party	10 April	Ethias Arena	011 29 94 99	<a href="http://www.ethiasarena.be">www.ethiasarena.be</a>
Heritage day 2010	25 April	Hasselt Centre		<a href="http://www.erfgoeddag.be">www.erfgoeddag.be</a>



## 6. EVENT CALENDAR

## MAY

De Hasselts Student regatta	5 May	Tuibrug floodgates Godsheide	011 23 96 31	www.hasselt.be
Helmut Lotti	7 May	Grenslandhallen	011 29 49 99	www.grenslandhallen.be
Spring jogging	8 May	Basvelden	011 81 05 03	www.zonhoven.be
International Tuning Treffen	24 May	Zonhoven Centre	0477 61 15 64	www.tuningtreffenlimburg.be
Live in Hasselt	29 and 30 May	Hasselt Centre		www.liveinhasselt.be
Car- free Sunday	30 May	Hasselt Centre	011 23 95 40	www.hasselt.be

## JUNE

Herkenrode Abbey festivals	5 and 6 June	Herkenrode Abbey	014 27 94 97	www.herkenrode.be
Portrait on Academy Year end exhibition	19 to 27 June	Urban Academy for Fine Arts	011 23 98 40	www.uitinhasselt.be
Hasselt Open Air Tango tango festival	19 June	Groenplein Hasselt		www.tangobrujo.be
Zonhoven Tapt Door	25, 26, 27 June	Zonhoven Centre	011 81 05 85	www.zonhoven.be
Belgium Koi meeting 2010	26 and 27 June	Japanese garden Hasselt		www.belgiumkoimeeting.be
Hasselt shopping festival sales	28, 29 and 30 June	Hasselt Centre		www.hasseltdewinkelstad.com

## JULY

Kunstmarkt Montmartre	17, 24 and 31 July	Behind city hall Groenplein Hasselt	011 22 19 19	www.uitinhasselt.be
Hasselt dance	Every Tuesday evening in July and August	Grote Markt Hasselt	011 23 95 56	www.uitinhasselt.be
Chime concerts in July and August	Every Friday evening	St-Quintinus Cathedral Hasselt	011 23 95 28	www.uitinhasselt.be



## 6. EVENT CALENDAR

## AUGUST

Theatre on the Market	5 to 8 August	Hasselt Centre		www.theateropdemarkt.be
Kunstmarkt Montmartre	7, 14, 21 and 28 August	Behind city hall Groenplein Hasselt	011 22 19 19	www.uitinhasselt.be
International Folklore festival	13, 14 and 15 August	Kuringen Centre		www.folklorefestival.com
Rimpelrock	14 August	Festivalweide Kiewit		www.rimpelrock.be
Septennial Virga Jesse festivals	Ommegang at 15, 18, 22 and 29 August			www.virgajessefeesten.be
Pukkelpop	19 to 21 August	Festivalweide Kiewit		www.pukkelpop.be
Fies van den Eeverscheut	29 August	Grote Markt Hasselt	011 23 95 56	www.uitinhasselt.be

## SEPTEMBER

Open Monuments day	12 September	Hasselt Centre		www.openmonumentendag.be
Hasselt Fair	18 to 26 September	Hasselt Centre	011 23 95 56	www.uitinhasselt.be

## OCTOBER

Trade Sunday	3 October	Hasselt Centre		www.hasseltdewinkelstad.com
De Hasseltse Jenever festivals	16 and 17 October	Hasselt Centre	011 23 95 56	www.jeneverfeesten.be
Week of the Taste	11 to 21 November	Various locations	011 23 95 50	www.weekvandesmaak.be

## NOVEMBER

Hololool (St.-Maarten celebration)	10 November	Zonhoven Centre	0477 65 76 87	www.holool.net
Winterland Hasselt	20 November to 2 January 2011	Kolonel Dusartplein		www.winterland.be

## DECEMBER

Christmas shopping Trade Sundays	12 and 19 December	Hasselt Centre		www.hasseltdewinkelstad.com
Christmas stalls tour	17, 18, 19, 21, 22, 23, 26, 28, 29 and 30 December	Hasselt Centre	011 23 95 40	www.hasselt.eu

\* View the most up to date agenda at [www.uitinhasselt.be](http://www.uitinhasselt.be)

## 7. INFORMATION AND TERMS & CONDITIONS FOR HASSELT GROUP VISITS

### GENERAL

- The confirmation form should be signed and returned to us within ten working days, otherwise Hasselt Tourism may cancel the visit.
- Every delay should immediately be reported to Hasselt Tourism.
- The final number of participants should be confirmed at least three days before the intended visit. If this confirmation is not done, the original number will be used.
- The cost of a guide is included in the complete day program.
- When booking a programme costing more than € 1,000, a deposit of € 250 must be paid, at least ten days before the planned visit.
- When visiting city museums or the Japanese Garden, outside of normal opening times, a special entrance fee is payable.
- When reserving the city tram a minimum number of 25 persons is required.
- No options may be exercised, only definitive reservations.
- Reservations should be made at least fourteen days prior to the date of the visit.
- The reservation of group visits is only possible during business hours, not over weekends or public holidays.

### GUIDES

- Guided visits can only be undertaken by a guide with a diploma (identifiable from the official badge) that has been appointed by Hasselt Tourism.
- Rates for guides: € 50 per commenced guide visit (first 2 hours), € 25 per extra hour, following on the first 2 hours, € 5 per hour supplement for a foreign language guide, maximum day rate per guide: € 120 (€ 150 for a foreign language guide). These rates

are valid from the start of the appointment.

- The guide starts to work at the designated hour. If the group experiences delays and the guided visit of two hours is exceeded (= € 50), a supplement is payable: 1-15 minutes: € 0 • 15-30 minutes: € 12.50 • 30-45 minutes: € 18 • 45-60 minutes: € 25.
- After a waiting period of 1 hour we no longer guarantee the execution of the task and the minimum guide rate of € 50 is credited.
- One guide is reserved for 25 persons. For an excursion per city tram or by bus, we reserve 1 guide per bus/tram.

### CHANGES

- For each change requiring a new confirmation, an administrative fee of € 12,50 is charged.

### CANCELLATIONS

- Cancellations should be made in writing per e-mail: [groepsbezoeken@hasselt.be](mailto:groepsbezoeken@hasselt.be) or per fax on number +32 11 22 50 23.
- A cancellation will result in the following costs: cancellation up to 1 week prior to the planned visit: € 12.50 (administrative fee) • cancellation 2 working days prior to the planned visit: € 37.50 (administrative fee) • cancellation within 24 hours prior to the planned visit: total amount of the reservation.
- If the group does not cancel but also does not arrive, the total amount of the reservation is charged.

## RESERVATION FORM GROUP VISIT

DATE OF VISIT: \_\_\_\_\_

NAME OF THE GROUP: \_\_\_\_\_

CONTACT PERSON: \_\_\_\_\_

STREET AND NUMBER: \_\_\_\_\_

MUNICIPALITY: \_\_\_\_\_

TEL: \_\_\_\_\_

E-MAIL: \_\_\_\_\_

NUMBER OF PERSONS (+/-) : \_\_\_\_\_

NATURE OF GROUP: \_\_\_\_\_

LANGUAGE/GUIDE:  DUTCH  FRENCH  GERMAN  ENGLISH

PROGRAMME: \_\_\_\_\_

Please write down the starting time and the choice of excursion or the day programme below

(with reference to the page number in this brochure)

---



---



---



---



---

### FORM OF PAYMENT

#### WHEN SIGHTSEEING

- Cash  
 After the visit via transfer (invoice)

#### WITH DAY PROGRAMMES

- Always after the visit  
via transfer (invoice)

Hasselt Tourism  
Lombaardstraat 3 (Town-Hall)  
BE-3500 Hasselt  
T +32 11 23 95 40  
F +32 11 22 50 23  
toerisme@hasselt.be  
www.hasselt.eu

Open from 1 April to 31 October, daily 7/7

- on weekdays from 9.00 to 17.00
- on Saturday from 10.00 to 17.00
- on Sundays and public holidays from 10.00 to 14.00

Open from 1 November to 31 March

- on weekdays from 9.00 to 17.00
- on Saturday from 10.00 to 17.00
- closed on Sundays and public holidays

Bank account number Hasselt Tourism

KBC: 450-0608581-59  
Deposits from abroad  
IBAN: BE 84 4500 6085 8159  
BIC: KREDBEBB

Zonhoven Tourism  
Visitor's centre Old Town-Hall  
Heuvenstraat 4  
BE-3520 Zonhoven  
T +32 11 60 26 19  
F +32 11 52 34 42  
toerisme@zonhoven.be  
www.zonhoven.be



Open from 1 January up to and including 31 December

- on weekdays from 9.00 to 12.00 and from 13.00 to 16.00

Open from 1 July to 31 August

- also open on Saturday and Sunday from 10.00 to 12.00 and from 13.00 to 16.00

Limburg Tourism  
T +32 11 30 55 00  
F +32 11 30 55 05  
info@toerismelimburg.be  
www.toerismelimburg.be

Flanders Tourism  
T +32 2 504 03 90  
F +32 2 504 04 48  
info@toerismevlaanderen.be  
www.visitflanders.com



112

The toll free European emergency number can be used in all member states of the European Union.